

Datasheet for ABIN2662406
anti-CCL5 antibody (PE)



[Go to Product page](#)

2 Images

Overview

| | |
|--------------|--|
| Quantity: | 100 µg |
| Target: | CCL5 |
| Reactivity: | Mouse |
| Host: | Mouse |
| Clonality: | Monoclonal |
| Conjugate: | This CCL5 antibody is conjugated to PE |
| Application: | Flow Cytometry (FACS) |

Product Details

| | |
|---------------|--|
| Clone: | 2E9-CCL5 |
| Isotype: | IgG2b kappa |
| Purification: | The antibody was purified by affinity chromatography and conjugated with PE under optimal conditions. The solution is free of unconjugated PE and unconjugated antibody. |

Target Details

| | |
|-------------------|--|
| Target: | CCL5 |
| Alternative Name: | CCL5 (CCL5 Products) |
| Background: | Chemokine (C-C motif) ligand 5 (CCL5), also known as regulated on activation, normal T cell expressed and secreted (RANTES), is a 10 kD protein primarily produced by CD8+ T cells. CCL5 can also be secreted by platelets, dendritic cells (DCs), and fibroblasts. CCL5 functions as a chemoattractant for T cells, monocytes, and eosinophils through binding of its receptor, CCR5. |

Target Details

CCL5 can inhibit binding of HIV-1 to CCR5 and inhibit HIV-1 entry.

Pathways: [Cellular Response to Molecule of Bacterial Origin](#), [Regulation of G-Protein Coupled Receptor Protein Signaling](#), [Smooth Muscle Cell Migration](#)

Application Details

Application Notes: Optimal working dilution should be determined by the investigator.

Restrictions: For Research Use only

Handling

Concentration: 0.2 mg/mL

Buffer: Phosphate-buffered solution, pH 7.2, containing 0.09 % sodium azide.

Preservative: Sodium azide

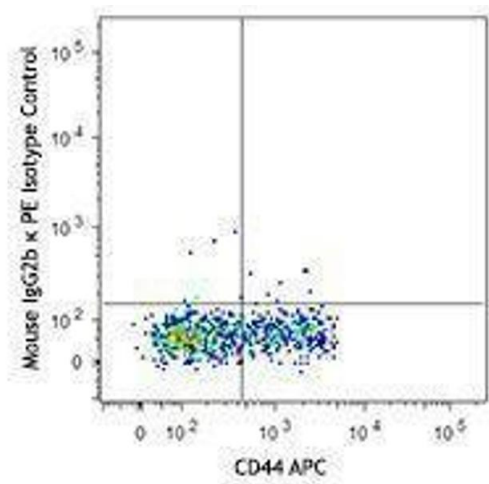
Precaution of Use: This product contains Sodium azide: a POISONOUS AND HAZARDOUS SUBSTANCE which should be handled by trained staff only.

Handling Advice: Protect from prolonged exposure to light. Do not freeze.

Storage: 4 °C

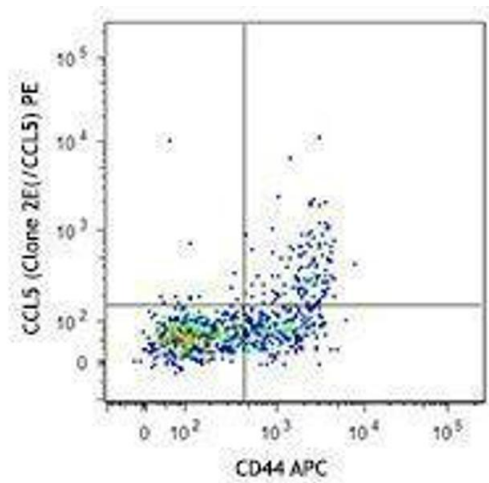
Storage Comment: The antibody solution should be stored undiluted between 2°C and 8°C.

Images



Flow Cytometry

Image 1.



Flow Cytometry

Image 2.