

Datasheet for ABIN2662408
anti-CCR8 antibody (PE)

2 Images

[Go to Product page](#)

Overview

Quantity:	100 tests
Target:	CCR8
Reactivity:	Human
Host:	Mouse
Clonality:	Monoclonal
Conjugate:	This CCR8 antibody is conjugated to PE
Application:	Flow Cytometry (FACS)

Product Details

Clone:	L263G8
Isotype:	IgG2a kappa
Purification:	The antibody was purified by affinity chromatography and conjugated with PE under optimal conditions. The solution is free of unconjugated PE and unconjugated antibody.

Target Details

Target:	CCR8
Alternative Name:	CCR8 (CCR8 Products)
Background:	CCR8, also known as ChemR1, TER1, and CKR-L1, belongs to the beta chemokine receptor family. It is predicted to be a seven transmembrane protein similar to G protein-coupled receptors. CCR8 is expressed on some subsets of T cells, monocytes, macrophages, eosinophils, thymocytes, Langerhans cells, neurons, and vascular smooth muscle cells. Binding

Target Details

with its ligand CCL1, CCR8 plays a role in the regulation of monocyte chemotaxis and thymic cell apoptosis. It has been reported that CCR8 is also a receptor for CCL18. CCR8 is also believed to be an alternative coreceptor to CD4 for HIV-1 infection.

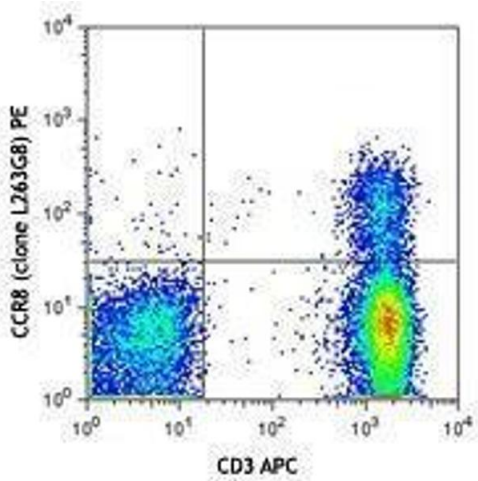
Application Details

Application Notes:	Optimal working dilution should be determined by the investigator.
Restrictions:	For Research Use only

Handling

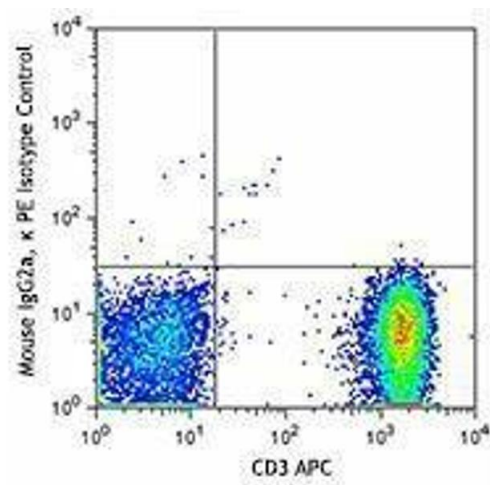
Buffer:	Phosphate-buffered solution, pH 7.2, containing 0.09 % sodium azide and 0.2 % (w/v) BSA .
Preservative:	Sodium azide
Precaution of Use:	This product contains Sodium azide: a POISONOUS AND HAZARDOUS SUBSTANCE which should be handled by trained staff only.
Handling Advice:	Protect from prolonged exposure to light. Do not freeze.
Storage:	4 °C
Storage Comment:	The antibody solution should be stored undiluted between 2°C and 8°C.

Images



Flow Cytometry

Image 1.



Flow Cytometry

Image 2.