

Datasheet for ABIN2662412 **anti-CCRL1 antibody (PE)**



[Go to Product page](#)

1 Image

Overview

Quantity:	100 tests
Target:	CCRL1
Reactivity:	Human
Host:	Mouse
Clonality:	Monoclonal
Conjugate:	This CCRL1 antibody is conjugated to PE
Application:	Flow Cytometry (FACS)

Product Details

Clone:	13E11
Isotype:	IgG2b kappa
Purification:	The antibody was purified by affinity chromatography and conjugated with PE under optimal conditions. The solution is free of unconjugated PE and unconjugated antibody.

Target Details

Target:	CCRL1
Alternative Name:	CCX-CKR (CCRL1 Products)
Background:	Human CCX-CKR, also known as CCRL1, is a 40 kD, G-protein-coupled, seven transmembrane receptor. CCRL1 is a decoy receptor for CCL2, CCL8, CCL13, CCL19, CCL21 and CCL25 that regulates chemotaxis of lymphocytes and cancer cells. Chemokine binding by CCX-CKR causes its internalization, reducing levels of available chemokine, and thus regulating migration of

Target Details

lymphocytes and cancerous cells. CCX-CKR is expressed by stromal cells of skin-draining lymph nodes, thymic epithelial cells, and immature dendritic cells (DCs). A low CCX-CKR expression in tumor cells correlates with a poor survival rate of breast cancer patients.

Application Details

Application Notes: Optimal working dilution should be determined by the investigator.

Restrictions: For Research Use only

Handling

Buffer: Phosphate-buffered solution, pH 7.2, containing 0.09 % sodium azide and 0.2 % (w/v) BSA .

Preservative: Sodium azide

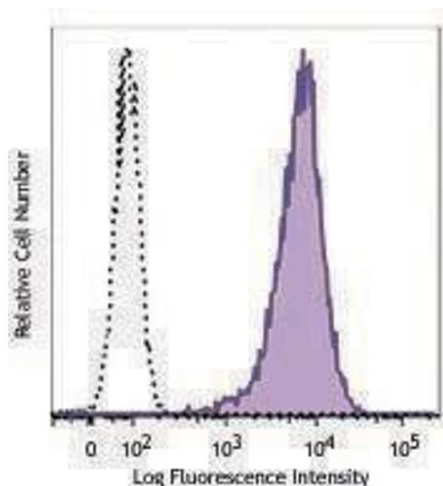
Precaution of Use: This product contains Sodium azide: a POISONOUS AND HAZARDOUS SUBSTANCE which should be handled by trained staff only.

Handling Advice: Protect from prolonged exposure to light. Do not freeze.

Storage: 4 °C

Storage Comment: The antibody solution should be stored undiluted between 2°C and 8°C.

Images



Flow Cytometry

Image 1.