

Datasheet for ABIN2662465
anti-KLRC1 antibody (PE)



[Go to Product page](#)

2 Images

Overview

Quantity:	50 µg
Target:	KLRC1
Reactivity:	Mouse
Host:	Mouse
Clonality:	Monoclonal
Conjugate:	This KLRC1 antibody is conjugated to PE
Application:	Flow Cytometry (FACS)

Product Details

Clone:	16A11
Isotype:	IgG2b kappa
Purification:	The antibody was purified by affinity chromatography and conjugated with PE under optimal conditions. The solution is free of unconjugated PE and unconjugated antibody.

Target Details

Target:	KLRC1
Alternative Name:	CD159a (KLRC1 Products)
Background:	CD159a, also known as NKG2A or KLRC1 (killer cell lectin-like receptor subfamily C, member 1), is a 43 kD type II transmembrane protein with extracellular C-type lectin domains. It belongs to the killer cell lectin-like receptor family also known as the NKG2 family. It is expressed on NK and NKT cells and activated CD8+ T cells. NKG2A binds to non-classical MHC class I molecule

Target Details

Qa-1 and causes inhibition of NK cell-mediated target-cell lysis.

Application Details

Application Notes: Optimal working dilution should be determined by the investigator.

Restrictions: For Research Use only

Handling

Concentration: 0.2 mg/mL

Buffer: Phosphate-buffered solution, pH 7.2, containing 0.09 % sodium azide.

Preservative: Sodium azide

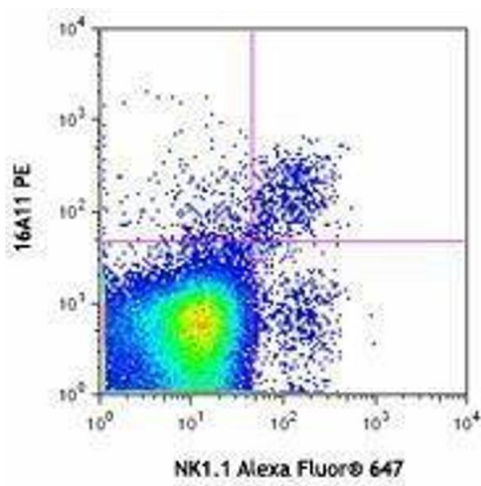
Precaution of Use: This product contains Sodium azide: a POISONOUS AND HAZARDOUS SUBSTANCE which should be handled by trained staff only.

Handling Advice: Protect from prolonged exposure to light. Do not freeze.

Storage: 4 °C

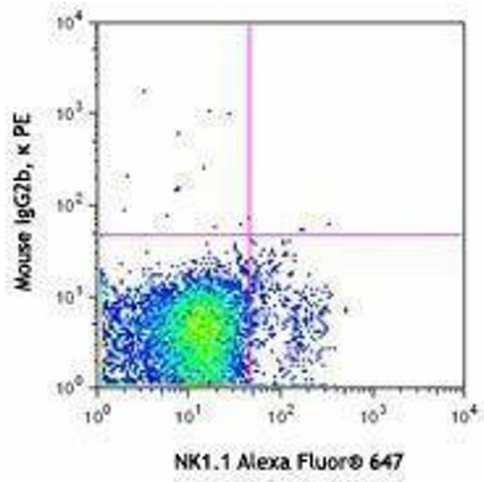
Storage Comment: The antibody solution should be stored undiluted between 2°C and 8°C.

Images



Flow Cytometry

Image 1.



Flow Cytometry

Image 2.