



Datasheet for ABIN2662521

anti-CD200 Receptor 3 (CD200R3) antibody (PE)



[Go to Product page](#)

2 Images

Overview

Quantity:	100 µg
Target:	CD200 Receptor 3 (CD200R3)
Reactivity:	Mouse
Host:	Rat
Clonality:	Monoclonal
Conjugate:	PE
Application:	Flow Cytometry (FACS), Immunofluorescence (IF), Immunohistochemistry (IHC)

Product Details

Clone:	Ba160
Isotype:	IgG2b kappa
Purification:	The antibody was purified by affinity chromatography and conjugated with PE under optimal conditions. The solution is free of unconjugated PE and unconjugated antibody.

Target Details

Target:	CD200 Receptor 3 (CD200R3)
Alternative Name:	CD200R3 (CD200R3 Products)
Background:	CD200R3, also known as CD200RLb and OX-2 Receptor 3, is a disulfide-linked dimeric CD200R-like receptor which belongs to immunoglobulin superfamily. Its positively charged amino acid lysine associates with ITAM- or YxxM motif-bearing adaptor molecules such as DAP12, DAP10, FcRγ, and CD3ζ. CD200R3 functions as an activating receptor to regulate IgE

Target Details

independent immune response.

Application Details

Application Notes: Optimal working dilution should be determined by the investigator.

Restrictions: For Research Use only

Handling

Buffer: Phosphate-buffered solution, pH 7.2, containing 0.09 % sodium azide.

Preservative: Sodium azide

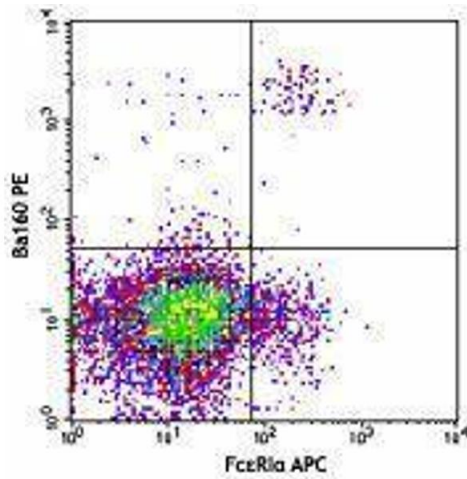
Precaution of Use: This product contains Sodium azide: a POISONOUS AND HAZARDOUS SUBSTANCE which should be handled by trained staff only.

Handling Advice: Protect from prolonged exposure to light. Do not freeze.

Storage: 4 °C

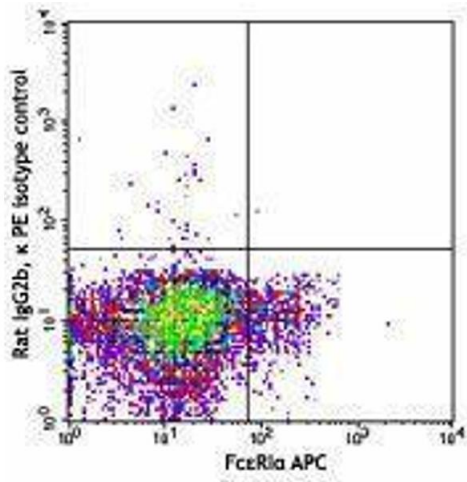
Storage Comment: The antibody solution should be stored undiluted between 2°C and 8°C.

Images



Flow Cytometry

Image 1.



Flow Cytometry

Image 2.