

Datasheet for ABIN2662577
anti-TLR10 antibody (AA 20-474) (PE)[Go to Product page](#)

2 Images

Overview

Quantity:	100 tests
Target:	TLR10
Binding Specificity:	AA 20-474
Reactivity:	Human
Host:	Mouse
Clonality:	Monoclonal
Conjugate:	This TLR10 antibody is conjugated to PE
Application:	Intracellular Flow Cytometry (ICFC)

Product Details

Immunogen:	AA 20-474 (NP_001017388)
Clone:	3C10C5
Isotype:	IgG1 kappa
Cross-Reactivity:	Cynomolgus
Purification:	The antibody was purified by affinity chromatography and conjugated with PE under optimal conditions. The solution is free of unconjugated PE and unconjugated antibody.

Target Details

Target:	TLR10
Alternative Name:	CD290 (TLR10 Products)

Target Details

Background: CD290, also known as TLR10, is a 91-100 kD glycosylated protein belonging to the toll-like receptor family. It is expressed on B cell, Treg cells, and plasmacytoid dendritic cells but absent on T cells, particularly non-Treg and granulocytes. It can interact with MyD88 and plays an important role in innate immunity and pattern recognition.

Pathways: [TLR Signaling, Activation of Innate immune Response, Toll-Like Receptors Cascades](#)

Application Details

Application Notes: Optimal working dilution should be determined by the investigator.

Restrictions: For Research Use only

Handling

Buffer: Phosphate-buffered solution, pH 7.2, containing 0.09 % sodium azide and 0.2 % (w/v) BSA .

Preservative: Sodium azide

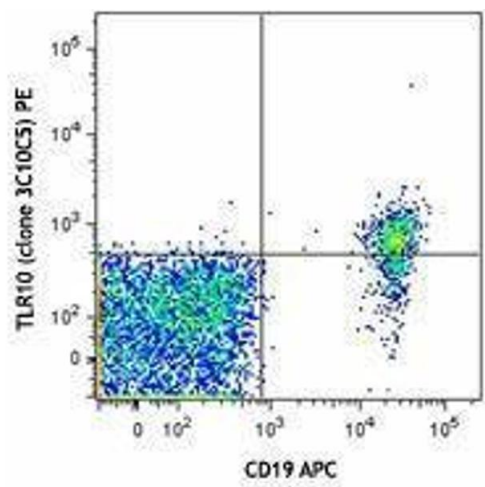
Precaution of Use: This product contains Sodium azide: a POISONOUS AND HAZARDOUS SUBSTANCE which should be handled by trained staff only.

Handling Advice: Protect from prolonged exposure to light. Do not freeze.

Storage: 4 °C

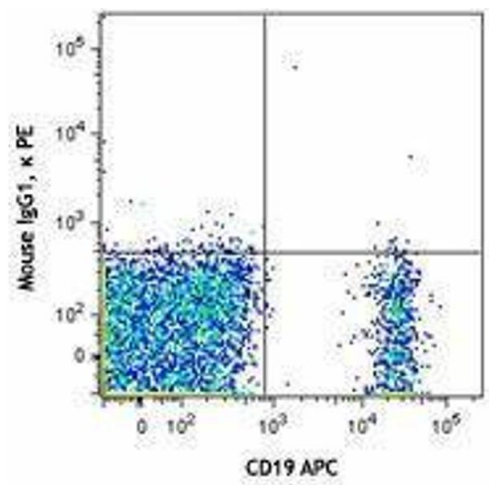
Storage Comment: The antibody solution should be stored undiluted between 2°C and 8°C.

Images



Flow Cytometry

Image 1.



Flow Cytometry

Image 2.