

Datasheet for ABIN2662609  
**anti-CRTAM antibody (PE)**[Go to Product page](#)

## 2 Images

## Overview

Quantity:	100 µg
Target:	CRTAM
Reactivity:	Mouse
Host:	Rat
Clonality:	Monoclonal
Conjugate:	This CRTAM antibody is conjugated to PE
Application:	Flow Cytometry (FACS), Immunoprecipitation (IP)

## Product Details

Clone:	11-5-CRTAM
Isotype:	IgG2a kappa
Purification:	The antibody was purified by affinity chromatography and conjugated with PE under optimal conditions. The solution is free of unconjugated PE and unconjugated antibody.

## Target Details

Target:	CRTAM
Alternative Name:	CD355 ( <a href="#">CRTAM Products</a> )
Background:	<p>Class-I MHC-restricted T-cell associated molecule (CRTAM), designated as CD355, is an Ig domain like type I transmembrane receptor, which belongs to the nectin family. In the immune system, CRTAM is strictly expressed on activated NK cells and activated CD8-positive T cells.</p> <p>By binding its ligand Nectin-like molecule 2 (Nect2), CRTAM plays an important role in</p>

## Target Details

mediating cell adhesion and migration.

Pathways: [Regulation of Leukocyte Mediated Immunity](#), [Positive Regulation of Immune Effector Process](#), [Activated T Cell Proliferation](#)

## Application Details

Application Notes: Optimal working dilution should be determined by the investigator.

Restrictions: For Research Use only

## Handling

Concentration: 0.2 mg/mL

Buffer: Phosphate-buffered solution, pH 7.2, containing 0.09 % sodium azide.

Preservative: Sodium azide

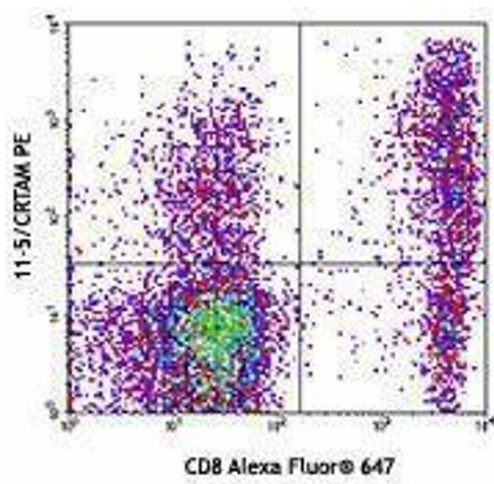
Precaution of Use: This product contains Sodium azide: a POISONOUS AND HAZARDOUS SUBSTANCE which should be handled by trained staff only.

Handling Advice: Protect from prolonged exposure to light. Do not freeze.

Storage: 4 °C

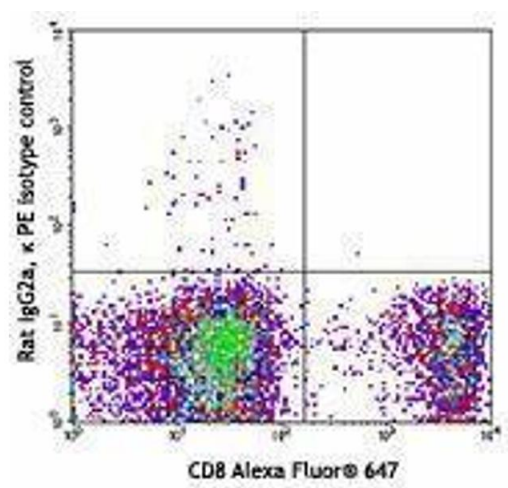
Storage Comment: The antibody solution should be stored undiluted between 2°C and 8°C.

## Images



### Flow Cytometry

Image 1.



Flow Cytometry

Image 2.