

Datasheet for ABIN2662625
anti-CLEC9A antibody (PE)[Go to Product page](#)

2 Images

Overview

Quantity:	100 µg
Target:	CLEC9A
Reactivity:	Mouse
Host:	Rat
Clonality:	Monoclonal
Conjugate:	This CLEC9A antibody is conjugated to PE
Application:	Flow Cytometry (FACS)

Product Details

Clone:	7H11
Isotype:	IgG1 kappa
Purification:	The antibody was purified by affinity chromatography and conjugated with PE under optimal conditions. The solution is free of unconjugated PE and unconjugated antibody.

Target Details

Target:	CLEC9A
Alternative Name:	CD370 (CLEC9A Products)
Background:	CD370 (CLEC9A), also known as DNGR1, is a 264 amino acid (aa) type II transmembrane glycoprotein which belongs to the C-type lectin superfamily. It contains a 208 aa extracellular region with a single carbohydrate recognition domain (CRD) and a cytoplasmic segment (35 aa) bearing an immunoreceptor tyrosine-based activation motif (ITAM). In mice, CLEC9A is strictly

Target Details

expressed on CD8a-positive dendritic cells and plasmacytoid dendritic cells. It recognizes a ubiquitous preformed acid-labile protein associated ligand(s) that is exposed on necrotic cells. CLEC9A ligation is necessary for efficient cross-presentation of dead-cell-associated antigen by recruitment and activation of the tyrosine kinase Syk.

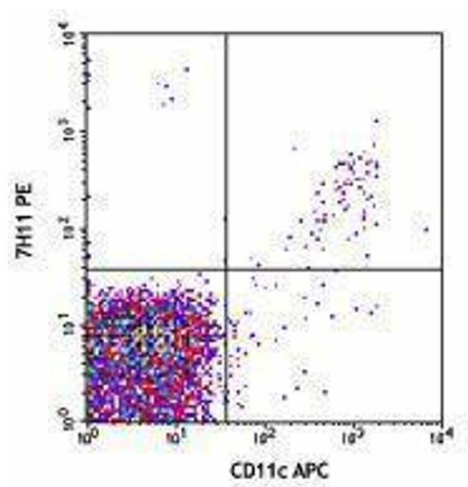
Application Details

Application Notes:	Optimal working dilution should be determined by the investigator.
Restrictions:	For Research Use only

Handling

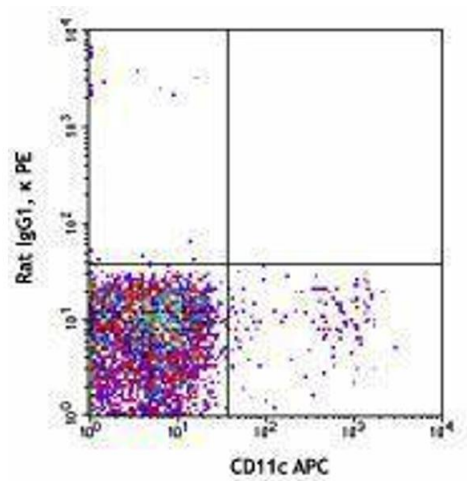
Concentration:	0.2 mg/mL
Buffer:	Phosphate-buffered solution, pH 7.2, containing 0.09 % sodium azide.
Preservative:	Sodium azide
Precaution of Use:	This product contains Sodium azide: a POISONOUS AND HAZARDOUS SUBSTANCE which should be handled by trained staff only.
Handling Advice:	Protect from prolonged exposure to light. Do not freeze.
Storage:	4 °C
Storage Comment:	The antibody solution should be stored undiluted between 2°C and 8°C.

Images



Flow Cytometry

Image 1.



Flow Cytometry

Image 2.