

Datasheet for ABIN2662636
anti-CD39 antibody (PE)



[Go to Product page](#)

2 Images

Overview

Quantity:	100 µg
Target:	CD39 (ENTPD1)
Reactivity:	Mouse
Host:	Rat
Clonality:	Monoclonal
Conjugate:	This CD39 antibody is conjugated to PE
Application:	Intracellular Flow Cytometry (ICFC)

Product Details

Clone:	Duha59
Isotype:	IgG2a kappa
Purification:	The antibody was purified by affinity chromatography and conjugated with PE under optimal conditions. The solution is free of unconjugated PE and unconjugated antibody.

Target Details

Target:	CD39 (ENTPD1)
Alternative Name:	CD39 (ENTPD1 Products)
Background:	CD39, nucleoside triphosphate diphosphohydrolase-1 (NTPDase 1), is an ectoenzyme that degrades ATP to AMP. It is a member of the ectonucleoside triphosphate dihydrolases (E-NTPDases), which are involved in regulation of extracellular nucleotide catabolism and controlling the extracellular nucleoside triphosphate pool (NTP). CD39 is the dominant member

Target Details

of this family in the immune system, and is involved in suppression of inflammation and control of platelet activation. CD39 is expressed on B cells, dendritic cells, and a subset of T cells, including regulatory T cells and memory T cells. The coordinated expression of CD39/CD73 on Tregs and the adenosine A2A receptor on activated T effector cells generates immunosuppressive loops.

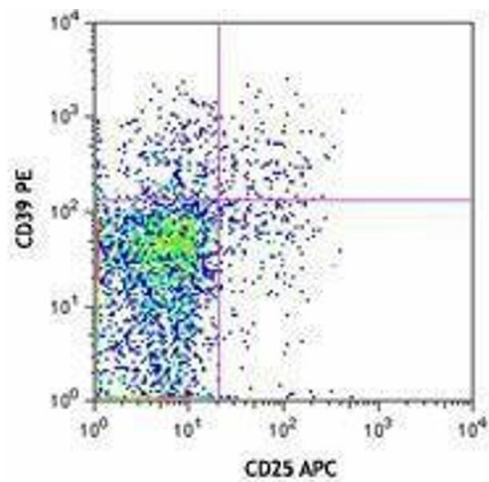
Application Details

Application Notes:	Optimal working dilution should be determined by the investigator.
Restrictions:	For Research Use only

Handling

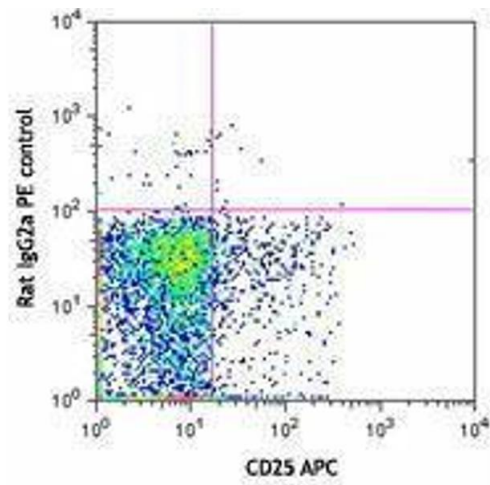
Concentration:	0.2 mg/mL
Buffer:	Phosphate-buffered solution, pH 7.2, containing 0.09 % sodium azide.
Preservative:	Sodium azide
Precaution of Use:	This product contains Sodium azide: a POISONOUS AND HAZARDOUS SUBSTANCE which should be handled by trained staff only.
Handling Advice:	Protect from prolonged exposure to light. Do not freeze.
Storage:	4 °C
Storage Comment:	The antibody solution should be stored undiluted between 2°C and 8°C.

Images



Flow Cytometry

Image 1.



Flow Cytometry

Image 2.