



[Go to Product page](#)

Datasheet for ABIN2662665  
**anti-CD59a antibody (PE)**

1 Image

### Overview

Quantity:	100 µg
Target:	CD59a (CD59A)
Reactivity:	Mouse
Host:	Mouse
Clonality:	Monoclonal
Conjugate:	This CD59a antibody is conjugated to PE
Application:	Flow Cytometry (FACS)

### Product Details

Clone:	MCD59-3
Isotype:	IgG1 kappa
Purification:	The antibody was purified by affinity chromatography and conjugated with PE under optimal conditions. The solution is free of unconjugated PE and unconjugated antibody.

### Target Details

Target:	CD59a (CD59A)
Alternative Name:	CD59a ( <a href="#">CD59A Products</a> )
Background:	CD59a, one of the two isoforms of CD59, is also known as membrane attack complex inhibition factor or MACIF. CD59a is a 18-25 kD GPI-anchored membrane glycoprotein of that protects cells from complement-mediated lysis by binding the complement factor C9, preventing its incorporation to the C5b-C8 complex, and impairing the formation of the membrane attack

## Target Details

complex (MAC). CD59a is broadly expressed by different cell types, including endothelia, erythrocytes, and platelets.

## Application Details

Application Notes: Optimal working dilution should be determined by the investigator.

Restrictions: For Research Use only

## Handling

Concentration: 0.2 mg/mL

Buffer: Phosphate-buffered solution, pH 7.2, containing 0.09 % sodium azide.

Preservative: Sodium azide

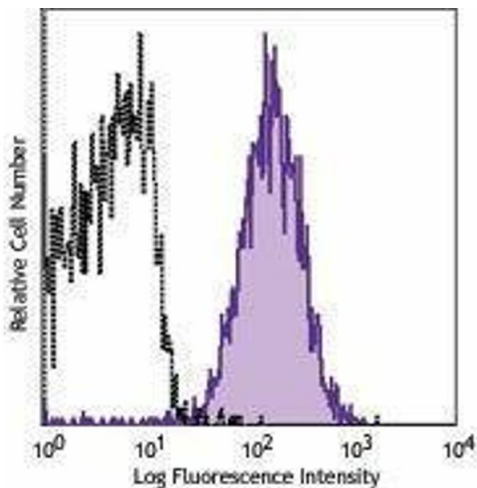
Precaution of Use: This product contains Sodium azide: a POISONOUS AND HAZARDOUS SUBSTANCE which should be handled by trained staff only.

Handling Advice: Protect from prolonged exposure to light. Do not freeze.

Storage: 4 °C

Storage Comment: The antibody solution should be stored undiluted between 2°C and 8°C.

## Images



### Flow Cytometry

Image 1.