

Datasheet for ABIN2662698
anti-CX3CR1 antibody (PE)



[Go to Product page](#)

2 Images

Overview

Quantity:	100 µg
Target:	CX3CR1
Reactivity:	Mouse
Host:	Mouse
Clonality:	Monoclonal
Conjugate:	This CX3CR1 antibody is conjugated to PE
Application:	Intracellular Flow Cytometry (ICFC)

Product Details

Clone:	SA011F11
Isotype:	IgG2a kappa
Purification:	The antibody was purified by affinity chromatography and conjugated with PE under optimal conditions. The solution is free of unconjugated PE and unconjugated antibody.

Target Details

Target:	CX3CR1
Alternative Name:	CX3CR1 (CX3CR1 Products)
Background:	CX3CR1 is a 40 kD, G-protein coupled receptor, with seven transmembrane regions. CX3CR1 is expressed by resident and alternatively activated macrophages (M2), a subset of monocytes, dendritic cells (DCs), NK cells, a subset of memory T cells, and mast cells. CX3CR1 is involved in cell recruitment during inflammation and participates in cell adhesion and extravasation from

Target Details

blood vessels. Its ligand is CX3CL1, also known as fractalkine or neurotactin. CX3CR1 is also a coreceptor for HIV1 and variations in this gene leads to increased susceptibility to HIV. In the brain, it is expressed by glial cells, which interact with CX3CL1 expressed by neurons.

Pathways: [Cellular Response to Molecule of Bacterial Origin](#)

Application Details

Application Notes: Optimal working dilution should be determined by the investigator.

Restrictions: For Research Use only

Handling

Concentration: 0.2 mg/mL

Buffer: Phosphate-buffered solution, pH 7.2, containing 0.09 % sodium azide.

Preservative: Sodium azide

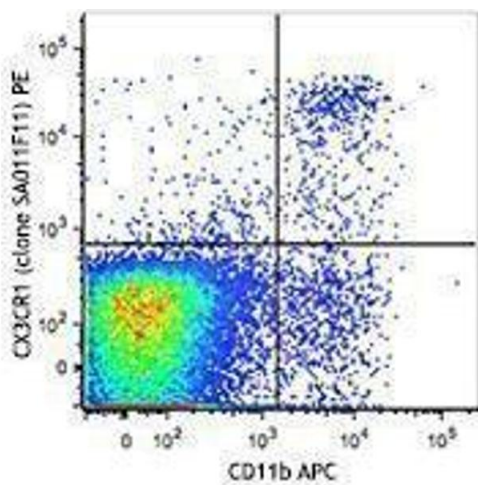
Precaution of Use: This product contains Sodium azide: a POISONOUS AND HAZARDOUS SUBSTANCE which should be handled by trained staff only.

Handling Advice: Protect from prolonged exposure to light. Do not freeze.

Storage: 4 °C

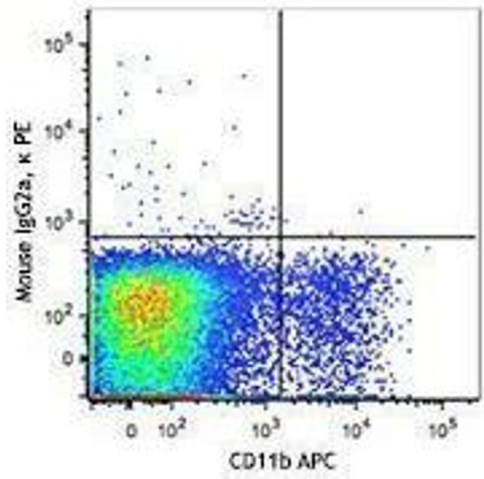
Storage Comment: The antibody solution should be stored undiluted between 2°C and 8°C.

Images



Flow Cytometry

Image 1.



Flow Cytometry

Image 2.