

Datasheet for ABIN2662700  
**anti-CXCL10 antibody (PE)**



[Go to Product page](#)

2 Images

## Overview

Quantity:	100 tests
Target:	CXCL10
Reactivity:	Human
Host:	Mouse
Clonality:	Monoclonal
Conjugate:	This CXCL10 antibody is conjugated to PE
Application:	Flow Cytometry (FACS)

## Product Details

Clone:	J034D6
Isotype:	IgG2a kappa
Cross-Reactivity:	Rhesus Monkey
Purification:	The antibody was purified by affinity chromatography and conjugated with PE under optimal conditions. The solution is free of unconjugated PE and unconjugated antibody.

## Target Details

Target:	CXCL10
Alternative Name:	CXCL10 ( <a href="#">CXCL10 Products</a> )
Background:	CXCL10, also known as IP-10, is a 8.7 kD chemokine. It belongs to the CXC chemokine family. It is expressed by monocytes, fibroblasts, and endothelial cells in response to IFN $\gamma$ . It can interact with CXCR3 and plays an important role in immune cell trafficking, particularly of T cells,

Target Details

dendritic cells, and NK cells. In addition, it alters expression of adhesion molecules.

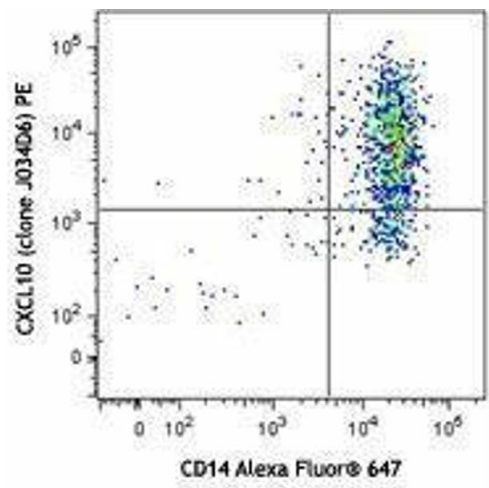
Application Details

Application Notes:	Optimal working dilution should be determined by the investigator.
Restrictions:	For Research Use only

Handling

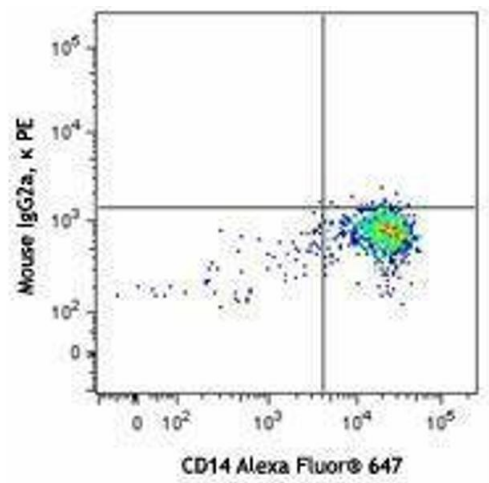
Buffer:	Phosphate-buffered solution, pH 7.2, containing 0.09 % sodium azide and 0.2 % (w/v) BSA .
Preservative:	Sodium azide
Precaution of Use:	This product contains Sodium azide: a POISONOUS AND HAZARDOUS SUBSTANCE which should be handled by trained staff only.
Handling Advice:	Protect from prolonged exposure to light. Do not freeze.
Storage:	4 °C
Storage Comment:	The antibody solution should be stored undiluted between 2°C and 8°C.

Images



Flow Cytometry

Image 1.



Flow Cytometry

Image 2.