

Datasheet for ABIN2662704
anti-CXCL5 antibody (PE)



[Go to Product page](#)

2 Images

Overview

Quantity:	100 tests
Target:	CXCL5
Reactivity:	Human
Host:	Mouse
Clonality:	Monoclonal
Conjugate:	This CXCL5 antibody is conjugated to PE
Application:	Flow Cytometry (FACS)

Product Details

Clone:	J111B7
Isotype:	IgG2b kappa
Purification:	The antibody was purified by affinity chromatography and conjugated with PE under optimal conditions. The solution is free of unconjugated PE and unconjugated antibody.

Target Details

Target:	CXCL5
Alternative Name:	CXCL5 (CXCL5 Products)
Background:	CXCL5, also known as ENA-78, is a 11.9 kD chemokine and belongs to the intercrine alpha, CXC chemokine family. It is expressed by monocytes and eosinophils in response to IL-1 and TNFα. CXCL5 can interact with CXCR2 and activate neutrophils and induce their migration. In vitro neutrophil chemotactic activity of CXCL5 is three fold higher. IFNγ suppresses expression of

Target Details

CXCL5. NFkB alone is sufficient to induce CXCL5 in contrast to IL-8, which requires both NFkB and C/EBP. Two forms are produced by N terminal proteolytic cleavage, ENA78 (8-78) and ENA 78 (9-78), and these isoforms exhibit higher chemotactic activity. Increased intra-hepatic levels of CXCL5 have been reported in patients with chronic liver disease.

Pathways: [Cellular Response to Molecule of Bacterial Origin, Regulation of Leukocyte Mediated Immunity](#)

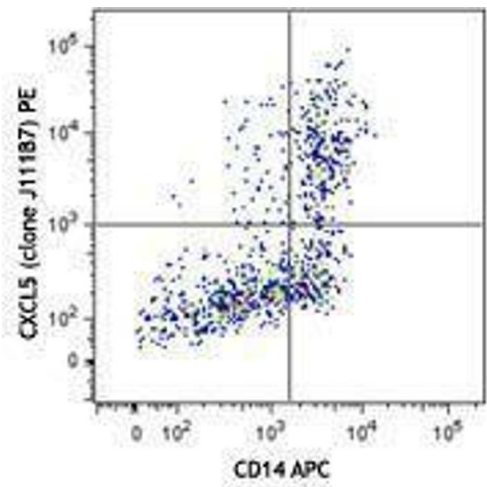
Application Details

Application Notes:	Optimal working dilution should be determined by the investigator.
Restrictions:	For Research Use only

Handling

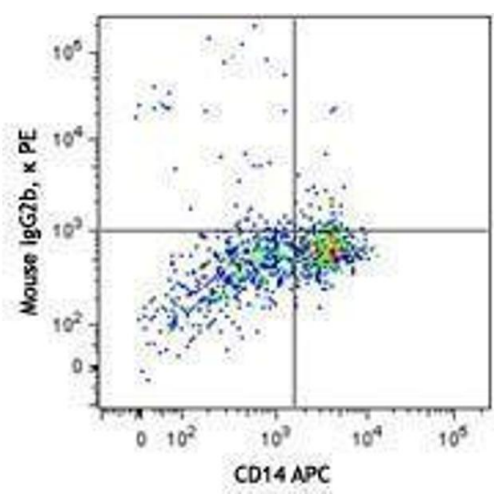
Buffer:	Phosphate-buffered solution, pH 7.2, containing 0.09 % sodium azide and 0.2 % (w/v) BSA .
Preservative:	Sodium azide
Precaution of Use:	This product contains Sodium azide: a POISONOUS AND HAZARDOUS SUBSTANCE which should be handled by trained staff only.
Handling Advice:	Protect from prolonged exposure to light. Do not freeze.
Storage:	4 °C
Storage Comment:	The antibody solution should be stored undiluted between 2°C and 8°C.

Images



Flow Cytometry

Image 1.



Flow Cytometry

Image 2.