

Datasheet for ABIN2662720
anti-FPR3 antibody (PE)[Go to Product page](#)

2 Images

Overview

Quantity:	100 tests
Target:	FPR3
Reactivity:	Human
Host:	Mouse
Clonality:	Monoclonal
Conjugate:	This FPR3 antibody is conjugated to PE
Application:	Flow Cytometry (FACS)

Product Details

Clone:	K102B9
Isotype:	IgG2a kappa
Purification:	The antibody was purified by affinity chromatography and conjugated with PE under optimal conditions. The solution is free of unconjugated PE and unconjugated antibody.

Target Details

Target:	FPR3
Alternative Name:	FPR3 (FPR3 Products)
Background:	FPR3, also known as FPRL2, belongs to the formyl peptide receptor family which includes FPR1, FPR2, and FPR3. Monocytes express FPR1, 2, and 3, upon differentiation into macrophages, expression of these receptors is maintained. Two ligands, humanin and F2L have been identified. Humanin is expressed in the heart, skeletal muscle, kidney, and liver but is

Target Details

not expressed in the immune system. F2L is a heme-binding protein first identified in the spleen. Binding of FPRL2 and F2L induces Ca^{2+} mobilization and neutrophil chemotaxis. Low level of expression of FPRL2 has also been reported on NK cells.

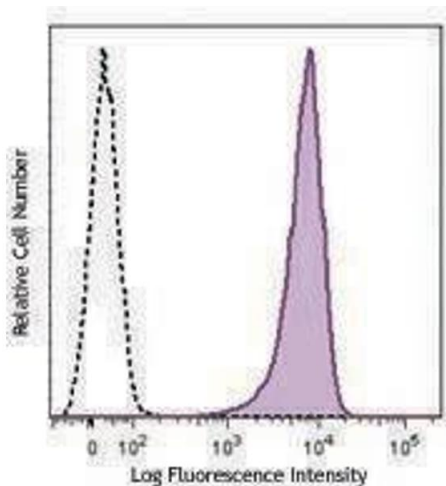
Application Details

Application Notes:	Optimal working dilution should be determined by the investigator.
Restrictions:	For Research Use only

Handling

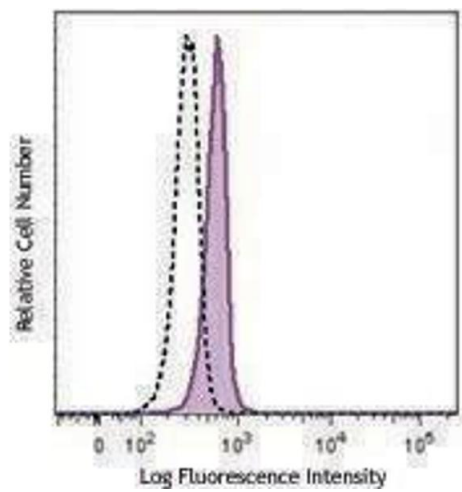
Buffer:	Phosphate-buffered solution, pH 7.2, containing 0.09 % sodium azide and 0.2 % (w/v) BSA .
Preservative:	Sodium azide
Precaution of Use:	This product contains Sodium azide: a POISONOUS AND HAZARDOUS SUBSTANCE which should be handled by trained staff only.
Handling Advice:	Protect from prolonged exposure to light. Do not freeze.
Storage:	4 °C
Storage Comment:	The antibody solution should be stored undiluted between 2°C and 8°C.

Images



Flow Cytometry

Image 1.



Flow Cytometry

Image 2.