

Datasheet for ABIN2662727
anti-LRRC32 antibody (PE)[Go to Product page](#)

2 Images

Overview

Quantity:	100 µg
Target:	LRRC32
Reactivity:	Mouse
Host:	Rat
Clonality:	Monoclonal
Conjugate:	This LRRC32 antibody is conjugated to PE
Application:	Flow Cytometry (FACS), Immunohistochemistry (IHC)

Product Details

Clone:	F011-5
Isotype:	IgG2a kappa
Purification:	The antibody was purified by affinity chromatography and conjugated with PE under optimal conditions. The solution is free of unconjugated PE and unconjugated antibody.

Target Details

Target:	LRRC32
Alternative Name:	GARP (LRRC32 Products)
Background:	Glycoprotein A Repetitions Predominant (GARP), also known as leucine rich repeat containing protein 32 (LRC32), is a 80 kD type I membrane glycoprotein with 20 leucine rich repeats in the extracellular portion of the protein. GARP was found on the surface of megakaryocytes, platelets, and activated Tregs. It serves as a receptor for latent TGF-β. Recent evidence

Target Details

suggests that GARP may play a role in controlling suppressor function of Tregs. A mutation in GARP has been reported in a large Samaritan kindred with Usher syndrome type 1. In addition, it has been found that GARP mRNA is highly amplified in different tumors, which indicates that tumor cells may use GARP to express TGF- β or to capture TGF- β from their surroundings, resulting in local suppression of anti-tumor immune responses or the induction of Tregs.

Pathways: [Activated T Cell Proliferation](#)

Application Details

Application Notes: Optimal working dilution should be determined by the investigator.

Restrictions: For Research Use only

Handling

Concentration: 0.2 mg/mL

Buffer: Phosphate-buffered solution, pH 7.2, containing 0.09 % sodium azide.

Preservative: Sodium azide

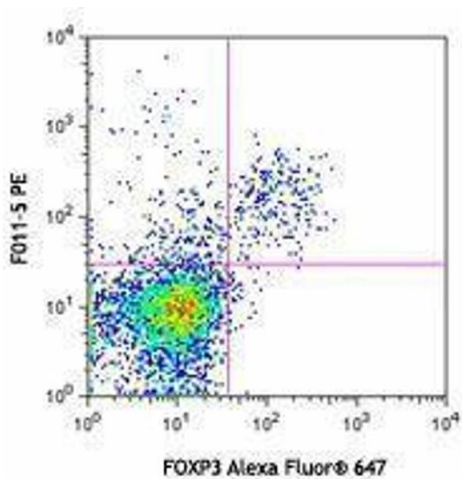
Precaution of Use: This product contains Sodium azide: a POISONOUS AND HAZARDOUS SUBSTANCE which should be handled by trained staff only.

Handling Advice: Protect from prolonged exposure to light. Do not freeze.

Storage: 4 °C

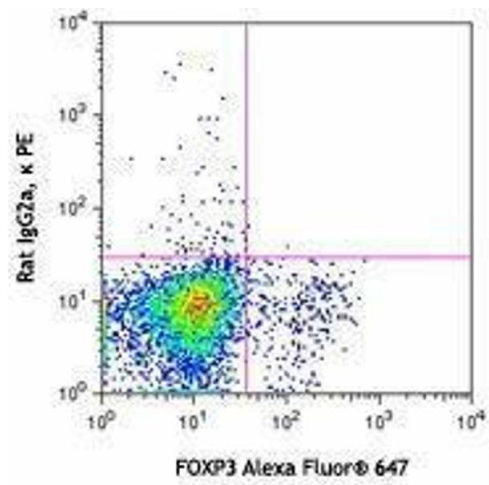
Storage Comment: The antibody solution should be stored undiluted between 2°C and 8°C.

Images



Flow Cytometry

Image 1.



Flow Cytometry

Image 2.