

Datasheet for ABIN2662739
anti-GZMA antibody (PE)



[Go to Product page](#)

2 Images

Overview

Quantity:	100 µg
Target:	GZMA
Reactivity:	Mouse
Host:	Mouse
Clonality:	Monoclonal
Conjugate:	This GZMA antibody is conjugated to PE
Application:	Flow Cytometry (FACS)

Product Details

Clone:	3G8-5
Isotype:	IgG2b kappa
Purification:	The antibody was purified by affinity chromatography and conjugated with PE under optimal conditions. The solution is free of unconjugated PE and unconjugated antibody.

Target Details

Target:	GZMA
Alternative Name:	Granzyme A (GZMA Products)
Background:	Granzyme A is a serine protease that is similar to Granzyme B. However, unlike granzyme B, granzyme A is a homodimer. It is expressed in cytotoxic T cells and natural killer cells (NK), but is not essential for induction of apoptosis or DNA fragmentation. Cell death induced by granzyme A is slower and morphologically different than the cell death induced by granzyme B.

Target Details

It plays a crucial role in infection-mediated inflammation as well as immunological responses against viruses, bacteria, and tumor cells.

Pathways: [Apoptosis](#)

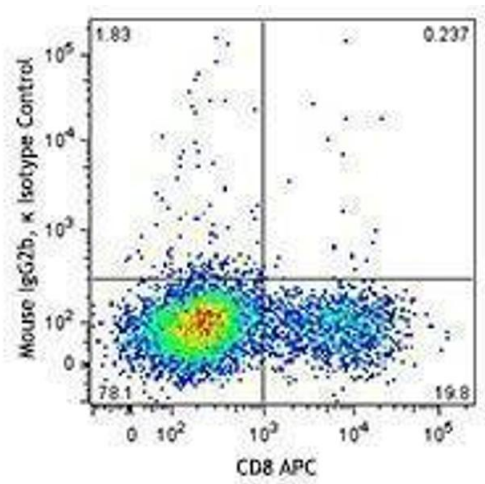
Application Details

Application Notes:	Optimal working dilution should be determined by the investigator.
Restrictions:	For Research Use only

Handling

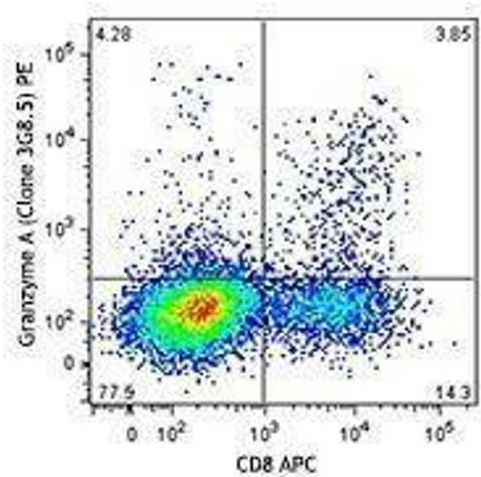
Concentration:	0.2 mg/mL
Buffer:	Phosphate-buffered solution, pH 7.2, containing 0.09 % sodium azide.
Preservative:	Sodium azide
Precaution of Use:	This product contains Sodium azide: a POISONOUS AND HAZARDOUS SUBSTANCE which should be handled by trained staff only.
Handling Advice:	Protect from prolonged exposure to light. Do not freeze.
Storage:	4 °C
Storage Comment:	The antibody solution should be stored undiluted between 2°C and 8°C.

Images



Flow Cytometry

Image 1.



Flow Cytometry

Image 2.