



[Go to Product page](#)

Datasheet for ABIN2662747  
**anti-HLA-DM antibody (PE)**

2 Images

### Overview

Quantity:	100 tests
Target:	HLA-DM
Reactivity:	Human
Host:	Mouse
Clonality:	Monoclonal
Conjugate:	This HLA-DM antibody is conjugated to PE
Application:	Flow Cytometry (FACS), Cytometry by Time of Flight (CyTOF)

### Product Details

Clone:	MaP-DM1
Isotype:	IgG1 kappa
Purification:	The antibody was purified by affinity chromatography and conjugated with PE under optimal conditions. The solution is free of unconjugated PE and unconjugated antibody.

### Target Details

Target:	HLA-DM
Alternative Name:	HLA-DM ( <a href="#">HLA-DM Products</a> )
Background:	HLA-DM is a non-classical MHC molecule, comprised of one $\alpha$ chain and one $\beta$ chain, which is expressed by antigen presenting cells. HLA-DM acts as a chaperon that stabilizes the MHC class II molecule in the lysosome, while enhances the exchange of CLIP for the antigenic peptide.

## Application Details

Application Notes: Optimal working dilution should be determined by the investigator.

Restrictions: For Research Use only

## Handling

Buffer: Phosphate-buffered solution, pH 7.2, containing 0.09 % sodium azide and 0.2 % (w/v) BSA .

Preservative: Sodium azide

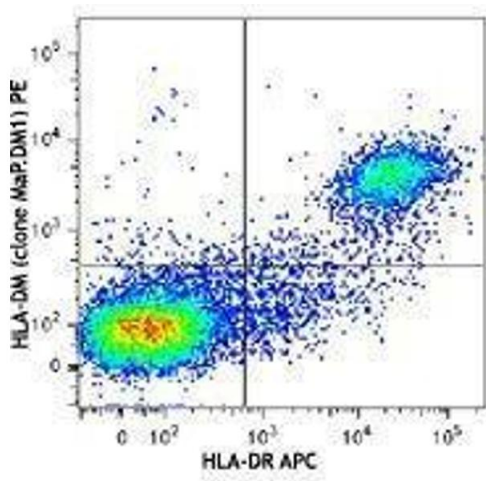
Precaution of Use: This product contains Sodium azide: a POISONOUS AND HAZARDOUS SUBSTANCE which should be handled by trained staff only.

Handling Advice: Protect from prolonged exposure to light. Do not freeze.

Storage: 4 °C

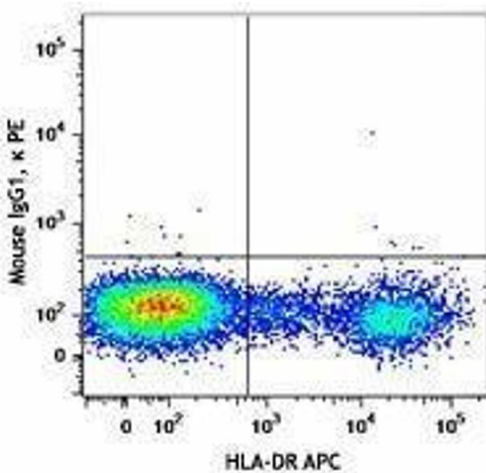
Storage Comment: The antibody solution should be stored undiluted between 2°C and 8°C.

## Images



### Flow Cytometry

Image 1.



### Flow Cytometry

Image 2.