



Datasheet for ABIN2662751  
**anti-HLA-DRB1 antibody (PE)**



[Go to Product page](#)

2 Images

Overview

Quantity:	100 tests
Target:	HLA-DRB1
Reactivity:	Human
Host:	Mouse
Clonality:	Monoclonal
Conjugate:	This HLA-DRB1 antibody is conjugated to PE
Application:	Flow Cytometry (FACS)

Product Details

Clone:	NFLD-D2
Isotype:	IgG1 kappa
Purification:	The antibody was purified by affinity chromatography and conjugated with PE under optimal conditions. The solution is free of unconjugated PE and unconjugated antibody.

Target Details

Target:	HLA-DRB1
Alternative Name:	HLA-DRB1 ( <a href="#">HLA-DRB1 Products</a> )
Background:	HLA-DRB1, a HLA class II beta chain paralog, is a heterodimer membrane anchored $\alpha$ (DRA) and $\beta$ chain (DRB). It plays an important role in extracellular protein-derived peptide presentation. It is expressed by antigen presenting cells (APC) such as B cells, dendritic cells, and macrophages. The $\beta$ chain (composed of $\beta$ 1 and $\beta$ 2) is 26-28 kD and contains

## Target Details

---

polymorphisms allowing for variability in peptide binding specificities. DRB1 is expressed by all individuals and its expression is five fold higher than DRB chains 3, 4, or 5. The peptide binding groove can accommodate peptides 10-30 residues long. Thirty-three different sub-types of HLA-DRB1\*04 have been described. Of these, HLA-DRB1\*04 is associated with an increased incidence of rheumatoid arthritis and is present on a subset of DRB1 Molecules.

Pathways: [TCR Signaling](#), [Positive Regulation of Peptide Hormone Secretion](#), [Production of Molecular Mediator of Immune Response](#), [CXCR4-mediated Signaling Events](#), [Cancer Immune Checkpoints](#), [Human Leukocyte Antigen \(HLA\) in Adaptive Immune Response](#)

## Application Details

---

Application Notes: Optimal working dilution should be determined by the investigator.

Restrictions: For Research Use only

## Handling

---

Buffer: Phosphate-buffered solution, pH 7.2, containing 0.09 % sodium azide and 0.2 % (w/v) BSA .

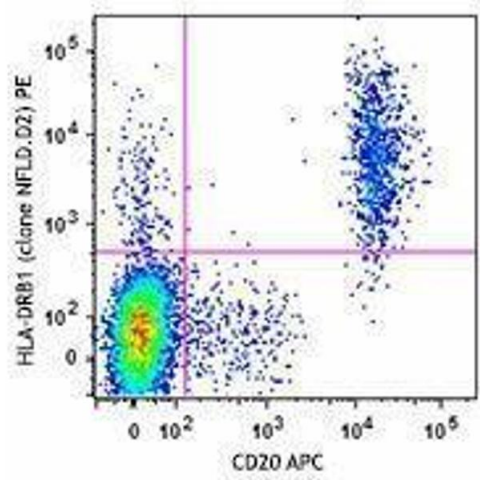
Preservative: Sodium azide

Precaution of Use: This product contains Sodium azide: a POISONOUS AND HAZARDOUS SUBSTANCE which should be handled by trained staff only.

Handling Advice: Protect from prolonged exposure to light. Do not freeze.

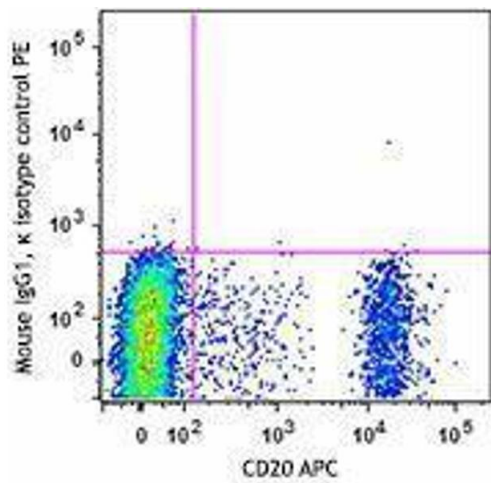
Storage: 4 °C

Storage Comment: The antibody solution should be stored undiluted between 2°C and 8°C.



Flow Cytometry

Image 1.



Flow Cytometry

Image 2.