

Datasheet for ABIN2662798
anti-LY6D antibody (PE)

2 Images

[Go to Product page](#)

Overview

Quantity:	100 µg
Target:	LY6D
Reactivity:	Mouse
Host:	Rat
Clonality:	Monoclonal
Conjugate:	This LY6D antibody is conjugated to PE
Application:	Flow Cytometry (FACS)

Product Details

Clone:	49-H4
Isotype:	IgG2c kappa
Purification:	The antibody was purified by affinity chromatography and conjugated with PE under optimal conditions. The solution is free of unconjugated PE and unconjugated antibody.

Target Details

Target:	LY6D
Alternative Name:	Ly-6D (LY6D Products)
Background:	Lymphocyte antigen 6D (Ly-6D), also known as thymocyte B-cell antigen (ThB), is a 16 kD GPI-linked cell surface glycoprotein. It belongs to the Ly6 gene family and contains one urokinase receptor (uPAR) /Ly6 domain. Ly-6D is involved in cell-cell adhesion and signal transduction. Ly-6D marks the earliest stage of B cell lineage commitment from the common lymphoid

Target Details

progenitors (CLP). It is expressed on B cells, immature thymocytes, and plasmacytoid dendritic cells.

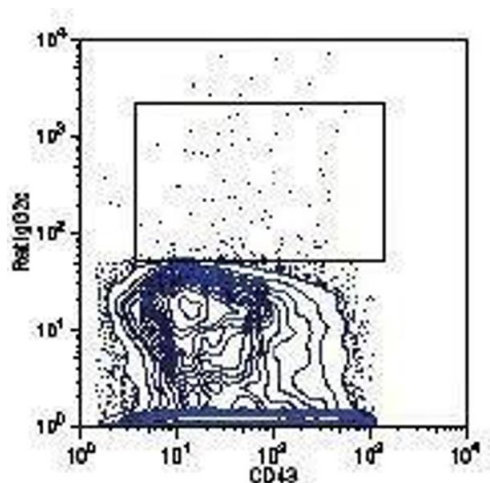
Application Details

Application Notes:	Optimal working dilution should be determined by the investigator.
Restrictions:	For Research Use only

Handling

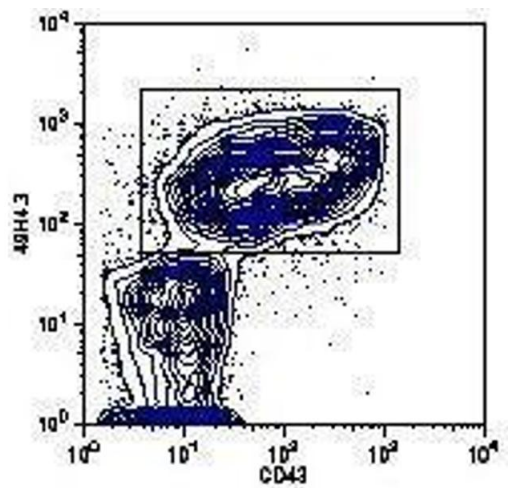
Concentration:	0.2 mg/mL
Buffer:	Phosphate-buffered solution, pH 7.2, containing 0.09 % sodium azide.
Preservative:	Sodium azide
Precaution of Use:	This product contains Sodium azide: a POISONOUS AND HAZARDOUS SUBSTANCE which should be handled by trained staff only.
Handling Advice:	Protect from prolonged exposure to light. Do not freeze.
Storage:	4 °C
Storage Comment:	The antibody solution should be stored undiluted between 2°C and 8°C.

Images



Flow Cytometry

Image 1.



Flow Cytometry

Image 2.