



[Go to Product page](#)

Datasheet for ABIN2662809
anti-MRGPRX2 antibody (PE)

1 Image

Overview

Quantity:	100 tests
Target:	MRGPRX2
Reactivity:	Human
Host:	Mouse
Clonality:	Monoclonal
Conjugate:	This MRGPRX2 antibody is conjugated to PE
Application:	Flow Cytometry (FACS)

Product Details

Clone:	K125H4
Isotype:	IgG2b kappa
Purification:	The antibody was purified by affinity chromatography and conjugated with PE under optimal conditions. The solution is free of unconjugated PE and unconjugated antibody.

Target Details

Target:	MRGPRX2
Alternative Name:	MRGX2 (MRGPRX2 Products)
Background:	MRGX2 (Mas-related G-protein coupled receptor member X2) is a 36 kD, seven transmembrane protein expressed on mast cells and sensory neurons from the dorsal root ganglia. MRGX2 is involved in mast cell-degranulation, and may regulate the function and development of sensory neurons. Originally described as an orphan receptor, it has been reported MRGX2 binds

Target Details

defensins and costistatin.

Application Details

Application Notes: Optimal working dilution should be determined by the investigator.

Restrictions: For Research Use only

Handling

Buffer: Phosphate-buffered solution, pH 7.2, containing 0.09 % sodium azide and 0.2 % (w/v) BSA .

Preservative: Sodium azide

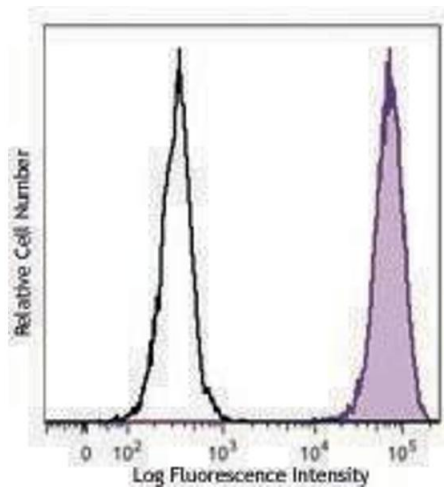
Precaution of Use: This product contains Sodium azide: a POISONOUS AND HAZARDOUS SUBSTANCE which should be handled by trained staff only.

Handling Advice: Protect from prolonged exposure to light. Do not freeze.

Storage: 4 °C

Storage Comment: The antibody solution should be stored undiluted between 2°C and 8°C.

Images



Flow Cytometry

Image 1.