

Datasheet for ABIN2662849
anti-SSEA-4 antibody (PE)



[Go to Product page](#)

1 Image

Overview

Quantity:	100 tests
Target:	SSEA-4
Reactivity:	Human, Mouse
Host:	Mouse
Clonality:	Monoclonal
Conjugate:	This SSEA-4 antibody is conjugated to PE
Application:	Flow Cytometry (FACS), Immunofluorescence (IF)

Product Details

Clone:	MC-813-70
Isotype:	IgG3 kappa
Cross-Reactivity:	Mouse (Murine)
Characteristics:	<p>The MC813-70 antibody reacts with a carbohydrate antigen which is named as Stage-Specific Embryonic Antigen-4 (SSEA-4). It is a terminal structure of globo-series glycolipids (NeuAcα2-3 Galβ1-3GalNAcβ1-R). SSEA-4 is expressed on human teratocarcinoma cells (EC), embryonic stem cells (ESC), embryonic germ cells (EG), and preimplantation embryos, subset of mesenchymal stem cells, erythrocytes, and erythromyeloid leukemia cell line K562. The expression of SSEA-3 on human ESC is downregulated upon differentiation. SSEA-4 is also expressed by mouse on unfertilized eggs and preimplantation to early cleaved embryos.</p>
Purification:	<p>The antibody was purified by affinity chromatography and conjugated with PE under optimal conditions. The solution is free of unconjugated PE and unconjugated antibody.</p>

Target Details

Target:	SSEA-4
Alternative Name:	SSEA-4 (SSEA-4 Products)

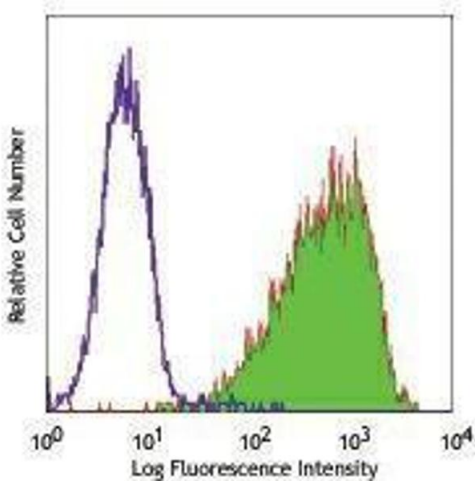
Application Details

Application Notes:	Optimal working dilution should be determined by the investigator.
Restrictions:	For Research Use only

Handling

Buffer:	Phosphate-buffered solution, pH 7.2, containing 0.09 % sodium azide and 0.2 % (w/v) BSA .
Preservative:	Sodium azide
Precaution of Use:	This product contains Sodium azide: a POISONOUS AND HAZARDOUS SUBSTANCE which should be handled by trained staff only.
Handling Advice:	Protect from prolonged exposure to light. Do not freeze.
Storage:	4 °C
Storage Comment:	The antibody solution should be stored undiluted between 2°C and 8°C.

Images



Flow Cytometry

Image 1.