

Datasheet for ABIN2662918
anti-CCR10 antibody (PE)

2 Images

[Go to Product page](#)

Overview

Quantity:	100 tests
Target:	CCR10
Reactivity:	Human
Host:	Armenian Hamster
Clonality:	Monoclonal
Conjugate:	This CCR10 antibody is conjugated to PE
Application:	Flow Cytometry (FACS)

Product Details

Clone:	6588-5
Isotype:	IgG
Cross-Reactivity:	Rhesus Monkey
Purification:	The antibody was purified by affinity chromatography, and conjugated with PE under optimal conditions. The solution is free of unconjugated PE and unconjugated antibody.

Target Details

Target:	CCR10
Alternative Name:	CCR10 (CCR10 Products)
Background:	CCR10, also known as GPR-2, is a G-protein-coupled seven transmembrane CC-chemokine receptor. It is the receptor of CCL27 (CTACK/ALP/ILC/ESKine) and CCL28 (MEC) and is expressed on a small subset of T memory cells, IgA-secreting cells, EBV-immortalized B cells,

Target Details

dermal microvascular endothelial cells and dermal fibroblasts. The interaction of CCR10 with its ligands plays a role in the regulation of T cell homing into cutaneous site and IgA-secreting cells migration.

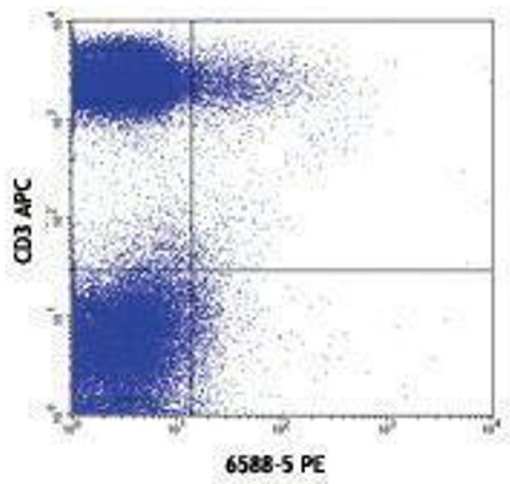
Application Details

Application Notes:	Optimal working dilution should be determined by the investigator.
Restrictions:	For Research Use only

Handling

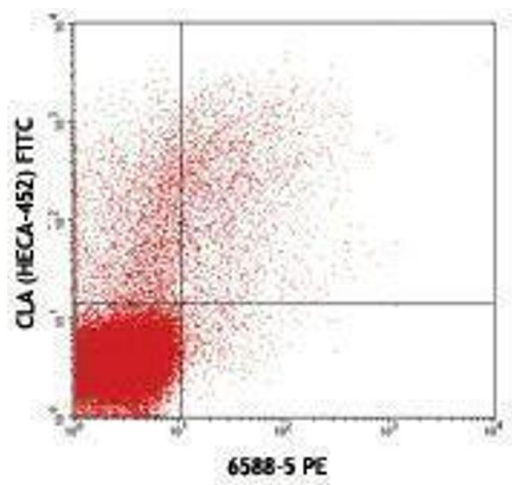
Buffer:	Phosphate-buffered solution, pH 7.2, containing 0.09 % sodium azide and 0.2 % (w/v) BSA .
Preservative:	Sodium azide
Precaution of Use:	This product contains Sodium azide: a POISONOUS AND HAZARDOUS SUBSTANCE which should be handled by trained staff only.
Handling Advice:	Protect from prolonged exposure to light. Do not freeze.
Storage:	4 °C
Storage Comment:	The antibody solution should be stored undiluted between 2°C and 8°C.

Images



Flow Cytometry

Image 1.



Flow Cytometry

Image 2.