

Datasheet for ABIN2663064  
**anti-KIR2DL3 antibody (PE)**



[Go to Product page](#)

1 Image

## Overview

Quantity:	100 tests
Target:	KIR2DL3
Reactivity:	Human
Host:	Mouse
Clonality:	Monoclonal
Conjugate:	This KIR2DL3 antibody is conjugated to PE
Application:	Flow Cytometry (FACS)

## Product Details

Clone:	DX27
Isotype:	IgG2a kappa
Purification:	The antibody was purified by affinity chromatography, and conjugated with PE under optimal conditions. The solution is free of unconjugated PE and unconjugated antibody.

## Target Details

Target:	KIR2DL3
Alternative Name:	CD158b ( <a href="#">KIR2DL3 Products</a> )
Background:	CD158b is expressed on natural killer cells and a subset of T cells. It is a member of the immunoglobulin superfamily containing two immunoglobulin C2-type domains. Both variants and alternative isoforms of CD158b have been reported. The interaction of CD158b with specific HLA-C antigens on a target cell (HLA-Cw1, HLA-Cw3, HLA-Cw7 alleles, for example)

## Target Details

inhibits cytotoxicity and prevents target cell lysis and death. The interactions between KIR and MHC class I are thought to be important in NK cell and T cell regulation following antigen stimulation. The absence of ligands for KIRs may lower the threshold for activation through activating receptors and increase inflammation and susceptibility to autoimmune disease.

Pathways: [Cancer Immune Checkpoints](#)

## Application Details

Application Notes: Optimal working dilution should be determined by the investigator.

Restrictions: For Research Use only

## Handling

Buffer: Phosphate-buffered solution, pH 7.2, containing 0.09 % sodium azide and 0.2 % (w/v) BSA .

Preservative: Sodium azide

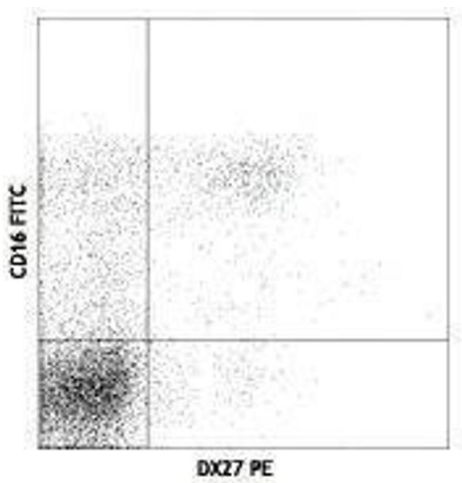
Precaution of Use: This product contains Sodium azide: a POISONOUS AND HAZARDOUS SUBSTANCE which should be handled by trained staff only.

Handling Advice: Protect from prolonged exposure to light. Do not freeze.

Storage: 4 °C

Storage Comment: The antibody solution should be stored undiluted between 2°C and 8°C.

## Images



### Flow Cytometry

Image 1.