

Datasheet for ABIN2663231  
**anti-TNFSF13 antibody (PE)**



[Go to Product page](#)

2 Images

## Overview

Quantity:	50 µg
Target:	TNFSF13
Reactivity:	Mouse
Host:	Armenian Hamster
Clonality:	Monoclonal
Conjugate:	This TNFSF13 antibody is conjugated to PE
Application:	Flow Cytometry (FACS)

## Product Details

Clone:	A3D8
Isotype:	IgG
Cross-Reactivity:	Human
Purification:	The antibody was purified by affinity chromatography, and conjugated with PE under optimal conditions. The solution is free of unconjugated PE and unconjugated antibody.

## Target Details

Target:	TNFSF13
Alternative Name:	CD256 ( <a href="#">TNFSF13 Products</a> )
Background:	CD256 (APRIL, TNFSF13, TALL2, TRDL1) a transmembranal protein of 26 kD, forms a homotrimeric molecule that is cleaved from the cell surface resulting in the soluble form of APRIL, it also forms heterotrimers with BlyS. Its receptor are TNFRSF13b/TACI and

Target Details

TNFRSF17/BCMA. Expressed by T cells, B cells, dendritic cells, monocytes, and macrophages, APRIL induces proliferation of T and B cells, promotes IgA class switching, downregulates T-cell dependent antibody responses, and regulates the growth of a variety of tumor cells.

Pathways: [Regulation of Leukocyte Mediated Immunity](#), [Positive Regulation of Immune Effector Process](#), [Production of Molecular Mediator of Immune Response](#)

Application Details

Application Notes: Optimal working dilution should be determined by the investigator.

Restrictions: For Research Use only

Handling

Concentration: 0.2 mg/mL

Buffer: Phosphate-buffered solution, pH 7.2, containing 0.09 % sodium azide.

Preservative: Sodium azide

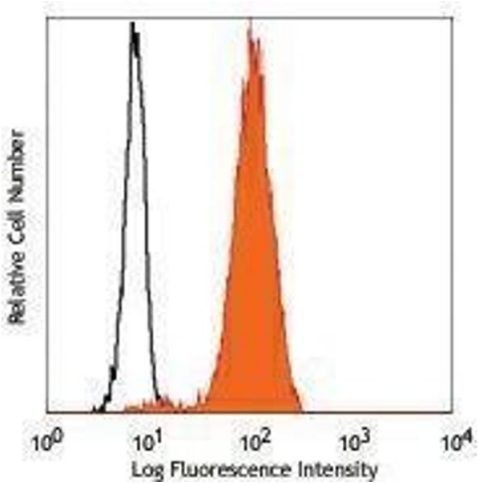
Precaution of Use: This product contains Sodium azide: a POISONOUS AND HAZARDOUS SUBSTANCE which should be handled by trained staff only.

Handling Advice: Protect from prolonged exposure to light. Do not freeze.

Storage: 4 °C

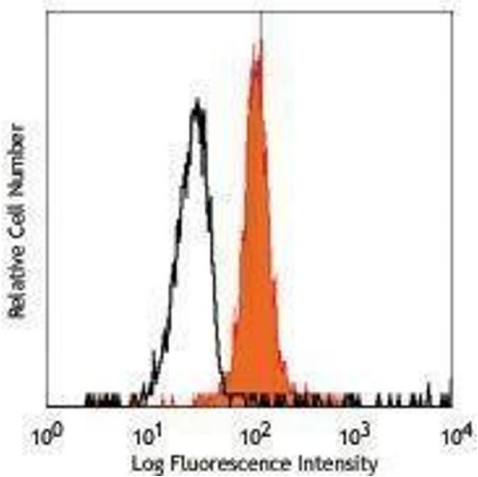
Storage Comment: The antibody solution should be stored undiluted between 2°C and 8°C.

Images



Flow Cytometry

Image 1.



Flow Cytometry

Image 2.