

Datasheet for ABIN2663371
anti-SIGLEC7 antibody (PE)



[Go to Product page](#)

2 Images

Overview

Quantity:	25 tests
Target:	SIGLEC7
Reactivity:	Human
Host:	Mouse
Clonality:	Monoclonal
Conjugate:	This SIGLEC7 antibody is conjugated to PE
Application:	Western Blotting (WB), Immunoprecipitation (IP), Immunofluorescence (IF)

Product Details

Clone:	S7-7
Isotype:	IgG1 kappa
Purification:	The antibody was purified by affinity chromatography, and conjugated with PE under optimal conditions. The solution is free of unconjugated PE and unconjugated antibody.

Target Details

Target:	SIGLEC7
Alternative Name:	CD328 (SIGLEC7 Products)
Background:	Siglec-7 is a 75 kD type I transmembrane protein and a member of the family of sialic acid-binding immunoglobulin-like lectins (Siglecs), also known as p75/AIRM1. It is primarily found on NK cells and monocytes. The cytoplasmic domain of Siglec-7 contains immunoreceptor tyrosine-based inhibitory motif (ITIM). CD328 mediates sialic acid-dependent cell-cell binding

Target Details

and functions as an inhibitory receptor of NK cells. CD328 preferentially binds to sialylated glycans with α 2,8 disialyl and α 2,6 sialyl residues.

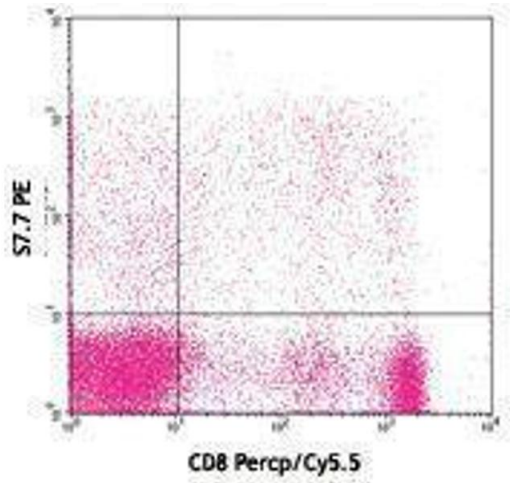
Application Details

Application Notes:	Optimal working dilution should be determined by the investigator.
Restrictions:	For Research Use only

Handling

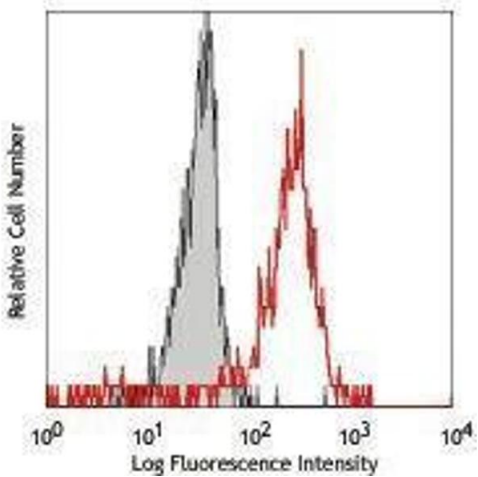
Buffer:	Phosphate-buffered solution, pH 7.2, containing 0.09 % sodium azide and 0.2 % (w/v) BSA .
Preservative:	Sodium azide
Precaution of Use:	This product contains Sodium azide: a POISONOUS AND HAZARDOUS SUBSTANCE which should be handled by trained staff only.
Handling Advice:	Protect from prolonged exposure to light. Do not freeze.
Storage:	4 °C
Storage Comment:	The antibody solution should be stored undiluted between 2°C and 8°C.

Images



Flow Cytometry

Image 1.



Flow Cytometry

Image 2.