



[Go to Product page](#)

Datasheet for ABIN2663402
anti-FCAMR antibody (PE)

2 Images

Overview

Quantity:	200 µg
Target:	FCAMR
Reactivity:	Human, Mouse
Host:	Mouse
Clonality:	Monoclonal
Conjugate:	This FCAMR antibody is conjugated to PE
Application:	Flow Cytometry (FACS)

Product Details

Clone:	TX61
Isotype:	IgG1 kappa
Purification:	The antibody was purified by affinity chromatography, and conjugated with PE under optimal conditions. The solution is free of unconjugated PE and unconjugated antibody.

Target Details

Target:	FCAMR
Alternative Name:	CD351 (FCAMR Products)
Target Type:	Antibody
Background:	Fcα/μ receptor (Fcα/μR), CD351, is a type I transmembrane protein with an Ig-like domain in extracellular portion. It is a novel Fc receptor for IgM and IgA. Fcα/μ receptor mRNA has been found in thymus, spleen, liver, kidney, intestines, testes, placenta, and T cell leukemia cell lines.

Target Details

Fcα/μ receptor protein expression is detected on B cells, macrophages, and activated T cells. Fcα/μ receptor mediates primary B lymphocyte endocytosis of IgM-coated *Staphylococcus aureus*. It is involved in the primary stages of the immune response to microbes.

Application Details

Application Notes: Optimal working dilution should be determined by the investigator.

Restrictions: For Research Use only

Handling

Concentration: 0.2 mg/mL

Buffer: Phosphate-buffered solution, pH 7.2, containing 0.09 % sodium azide.

Preservative: Sodium azide

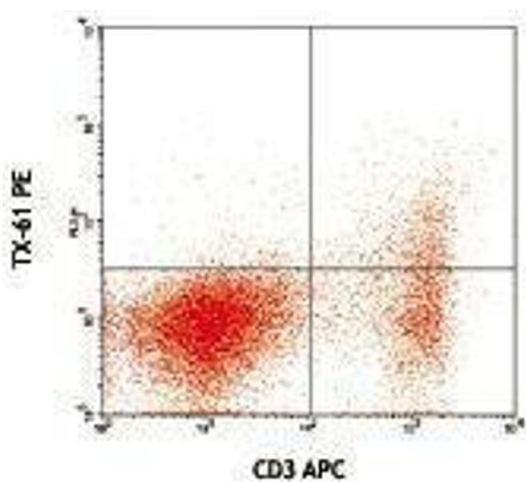
Precaution of Use: This product contains Sodium azide: a POISONOUS AND HAZARDOUS SUBSTANCE which should be handled by trained staff only.

Handling Advice: Protect from prolonged exposure to light. Do not freeze.

Storage: 4 °C

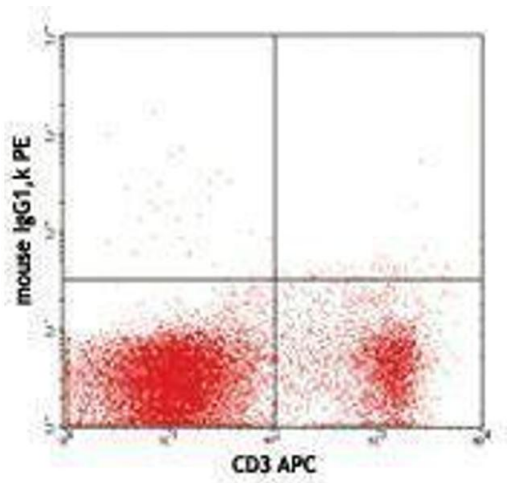
Storage Comment: The antibody solution should be stored undiluted between 2°C and 8°C.

Images



Flow Cytometry

Image 1.



Flow Cytometry

Image 2.