



[Go to Product page](#)

Datasheet for ABIN2663559

anti-CEACAM1/5/6 antibody (PE)

1 Image

Overview

Quantity:	100 tests
Target:	CEACAM1/5/6
Reactivity:	Human
Host:	Mouse
Clonality:	Monoclonal
Conjugate:	This CEACAM1/5/6 antibody is conjugated to PE
Application:	Flow Cytometry (FACS)

Product Details

Clone:	ASL-32
Isotype:	IgG2b kappa
Purification:	The antibody was purified by affinity chromatography, and conjugated with PE under optimal conditions. The solution is free of unconjugated PE and unconjugated antibody.

Target Details

Target:	CEACAM1/5/6
Alternative Name:	CD66a/c/e (CEACAM1/5/6 Products)
Background:	The ASL-32 mAb reacts with an antigen epitope shared by CD66a, c and e. CD66a/c/e are members of the CEA (carcinoembryonic antigen) family of the Ig superfamily. CD66 plays a role in hemophilic and heterophilic adhesion. CD66a, also known as CEACAM1 and BGP (biliary glycoprotein), is mainly expressed on granulocytes, binds to CD66a, c, e, and CD62E. CD66c

Target Details

(known as CEACAM6, NCA) is expressed on granulocytes and epithelial cells. The ligands of CD66c are CD66a-e, CD62E and Galectins. CD66e molecule is also called CEA or CEACAM5, and is primarily found on epithelial cells. CD66e binds to CD66a, c and e.

Application Details

Application Notes: Optimal working dilution should be determined by the investigator.

Restrictions: For Research Use only

Handling

Buffer: Phosphate-buffered solution, pH 7.2, containing 0.09 % sodium azide and 0.2 % (w/v) BSA .

Preservative: Sodium azide

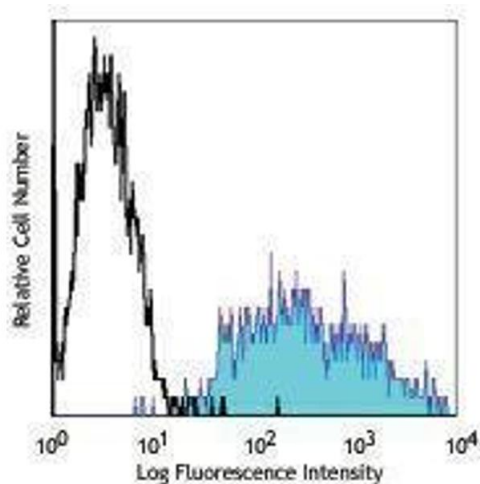
Precaution of Use: This product contains Sodium azide: a POISONOUS AND HAZARDOUS SUBSTANCE which should be handled by trained staff only.

Handling Advice: Protect from prolonged exposure to light. Do not freeze.

Storage: 4 °C

Storage Comment: The antibody solution should be stored undiluted between 2°C and 8°C.

Images



Flow Cytometry

Image 1.