

Datasheet for ABIN2663810
anti-Integrin beta 7 antibody (PE)[Go to Product page](#)

2 Images

Overview

Quantity:	100 tests
Target:	Integrin beta 7 (ITGB7)
Reactivity:	Human, Mouse
Host:	Rat
Clonality:	Monoclonal
Conjugate:	This Integrin beta 7 antibody is conjugated to PE
Application:	Flow Cytometry (FACS)

Product Details

Clone:	FIB504
Isotype:	IgG2a kappa
Cross-Reactivity:	Chimpanzee, Baboon, Cynomolgus, Rhesus Monkey
Purification:	The antibody was purified by affinity chromatography, and conjugated with PE under optimal conditions. The solution is free of unconjugated PE and unconjugated antibody.

Target Details

Target:	Integrin beta 7 (ITGB7)
Alternative Name:	Integrin Beta7 (ITGB7 Products)
Background:	Integrin $\beta 7$ is a 130 kD glycoprotein also known as integrin βp . It is a member of the Ig superfamily. In association with integrin $\alpha 4$ or αE chain, $\beta 7$ forms $\alpha 4/\beta 7$ or $\alpha E/\beta 7$ heterodimer. $\alpha 4/\beta 7$ (CD49d/ $\beta 7$, LPAM-1) is expressed on the majority of peripheral lymphocytes, on small

Target Details

subsets of thymocytes, and bone marrow progenitors. LPAM-1 binds to several ligands, VCAM-1, MAdCAM-1 and fibronectin, and is involved in lymphocyte adhesion and some hematopoietic progenitor cells migration. $\alpha E/\beta 7$ (CD103/ $\beta 7$, $\alpha EL/\beta 7$) is expressed on intestinal intraepithelial lymphocytes (IEL), dendritic epidermal T cells, T regulatory cells, a subset of CD8+ T cells in lymph nodes and lamina propria. CD103/ $\beta 7$ complex is thought to play a role in lymphocyte retention via interaction with its ligand E-Cadherin.

Pathways: [Integrin Complex](#)

Application Details

Application Notes: Optimal working dilution should be determined by the investigator.

Restrictions: For Research Use only

Handling

Buffer: Phosphate-buffered solution, pH 7.2, containing 0.09 % sodium azide and 0.2 % (w/v) BSA .

Preservative: Sodium azide

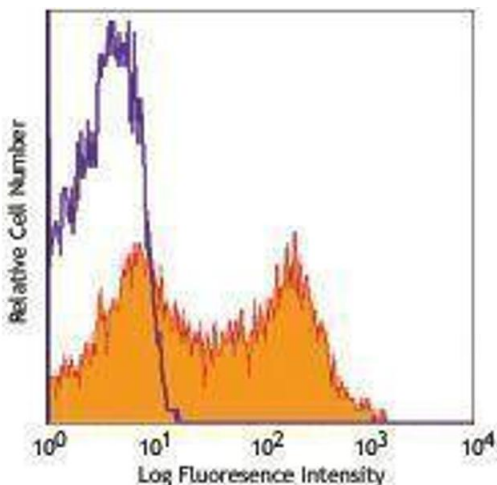
Precaution of Use: This product contains Sodium azide: a POISONOUS AND HAZARDOUS SUBSTANCE which should be handled by trained staff only.

Handling Advice: Protect from prolonged exposure to light. Do not freeze.

Storage: 4 °C

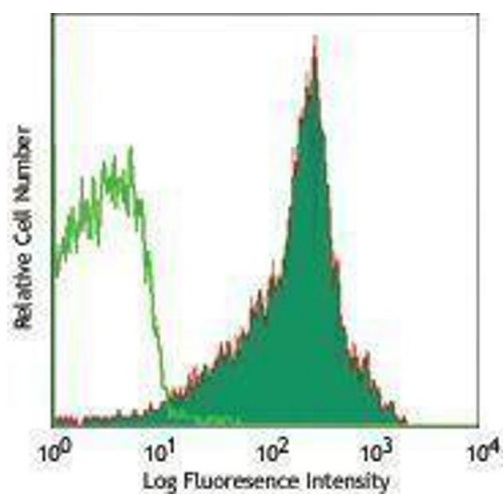
Storage Comment: The antibody solution should be stored undiluted between 2°C and 8°C.

Images



Flow Cytometry

Image 1.



Flow Cytometry

Image 2.