

Datasheet for ABIN2663817  
**anti-FGFBP2 antibody (PE)**[Go to Product page](#)

## 2 Images

## Overview

Quantity:	25 tests
Target:	FGFBP2
Reactivity:	Human
Host:	Mouse
Clonality:	Monoclonal
Conjugate:	This FGFBP2 antibody is conjugated to PE
Application:	Flow Cytometry (FACS)

## Product Details

Clone:	TDA3
Isotype:	IgG1 kappa
Purification:	The antibody was purified by affinity chromatography, and conjugated with PE under optimal conditions. The solution is free of unconjugated PE and unconjugated antibody.

## Target Details

Target:	FGFBP2
Alternative Name:	Ksp37 ( <a href="#">FGFBP2 Products</a> )
Background:	Ksp37 (killer-specific secretory protein of 37 kD), also known as FGFBP2 (FGF binding protein 2), is a 37 kD Th1-specific secretory protein. It is produced by NK cells, $\gamma/\delta$ T cells, a subset of effector CD8 T cells and Th1 cells, and secreted to serum. Most Ksp37 expressing cells coexpress perforin. It suggests that Ksp37 may be involved in an essential process of cytotoxic

## Target Details

lymphocyte-mediated immunity. Elevated Ksp37 level in body fluids has been found in asthma and some infectious disease patients.

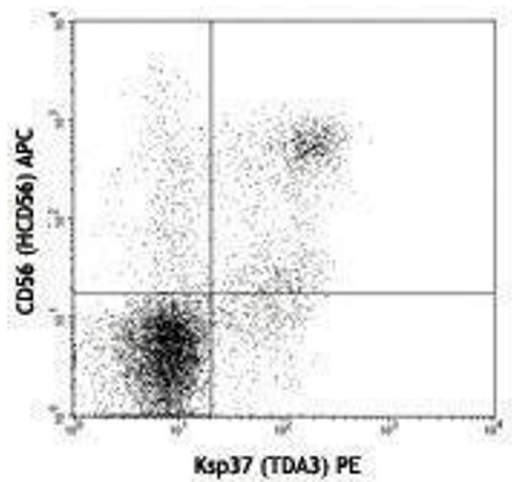
## Application Details

Application Notes:	Optimal working dilution should be determined by the investigator.
Restrictions:	For Research Use only

## Handling

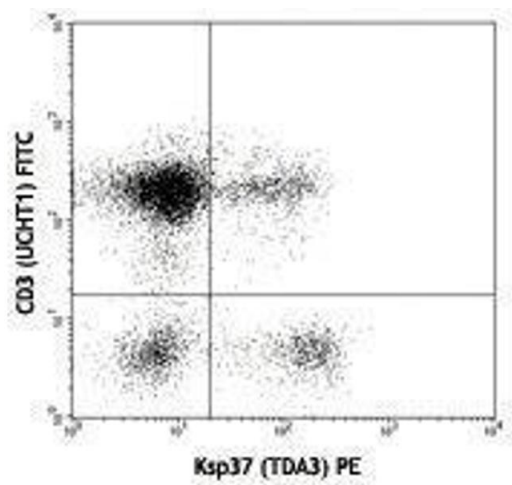
Buffer:	Phosphate-buffered solution, pH 7.2, containing 0.09 % sodium azide and 0.2 % (w/v) BSA .
Preservative:	Sodium azide
Precaution of Use:	This product contains Sodium azide: a POISONOUS AND HAZARDOUS SUBSTANCE which should be handled by trained staff only.
Handling Advice:	Protect from prolonged exposure to light. Do not freeze.
Storage:	4 °C
Storage Comment:	The antibody solution should be stored undiluted between 2°C and 8°C.

## Images



### Flow Cytometry

Image 1.



Flow Cytometry

Image 2.