



[Go to Product page](#)

Datasheet for ABIN2663821
anti-KLRA1 antibody (PE)

1 Image

Overview

Quantity:	200 µg
Target:	KLRA1
Reactivity:	Mouse
Host:	Rat
Clonality:	Monoclonal
Conjugate:	This KLRA1 antibody is conjugated to PE
Application:	Immunohistochemistry (IHC), Flow Cytometry (FACS)

Product Details

Clone:	YE1-48-10-6
Isotype:	IgG2a kappa
Purification:	The antibody was purified by affinity chromatography, and conjugated with PE under optimal conditions. The solution is free of unconjugated PE and unconjugated antibody.

Target Details

Target:	KLRA1
Alternative Name:	Ly-49A (KLRA1 Products)
Background:	Ly-49A is a 44 kD member of the C-type lectin/Ly-49 family proteins. It is a type-II transmembrane, disulfide-linked homodimer with C-type lectin extracellular domains. Ly-49A is present on a subset of NK and NK-T cells. Ly-49A, like other members of this family, inhibits NK cell activation through the recognition and interaction of certain MHC class I haplotypes on

Target Details

potential target cells. The Ly-49A receptor recognizes H-2Dd and H-2Dk, triggering phosphorylation of the ITIM motif in the cytoplasmic domain and recruitment of SHP-1 and SHP-2. The YE1/48.10.6 antibody reacts with NK cells from all mouse strains tested and reverses the inhibition of NK cytotoxicity.

Application Details

Application Notes: Optimal working dilution should be determined by the investigator.

Restrictions: For Research Use only

Handling

Concentration: 0.2 mg/mL

Buffer: Phosphate-buffered solution, pH 7.2, containing 0.09 % sodium azide.

Preservative: Sodium azide

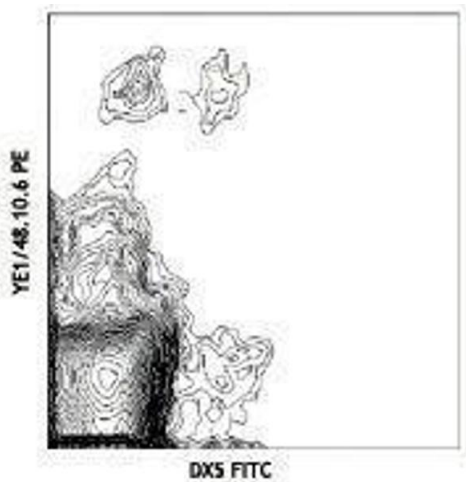
Precaution of Use: This product contains Sodium azide: a POISONOUS AND HAZARDOUS SUBSTANCE which should be handled by trained staff only.

Handling Advice: Protect from prolonged exposure to light. Do not freeze.

Storage: 4 °C

Storage Comment: The antibody solution should be stored undiluted between 2°C and 8°C.

Images



Flow Cytometry

Image 1.