

Datasheet for ABIN2663848  
**anti-Musculin antibody (PE)**



[Go to Product page](#)

2 Images

## Overview

Quantity:	100 tests
Target:	Musculin (MSC)
Reactivity:	Human
Host:	Mouse
Clonality:	Monoclonal
Conjugate:	This Musculin antibody is conjugated to PE
Application:	Flow Cytometry (FACS)

## Product Details

Clone:	W7C6
Isotype:	IgG1 kappa
Characteristics:	<p>The W7C6 antibody was generated by immunization with Weri-RB-1 cells. It reacts with mesenchymal stem cells and some tested neoplastic cell lines (HT29, Hela, MCF-7, REH). Further studies have shown that W7C6 antigen is identical to protein tyrosine phosphatase LAR. Mesenchymal stem cells or MSCs are originally name as bone marrow stromal cells. They are a population of adult stem cells with a large capacity for self-renewal and multipotency for differentiation into a variety of cell types including osteoblasts, chondrocytes, myocytes, adipocytes, <math>\beta</math> -pancreatic islets cells and certain neuronal cells. MSCs reside in many tissues, such as bone marrow, placenta, adipose tissue, adult peripheral blood, fetal blood, skin, as well as liver and lung. Besides their plasticity for tissue repair, MSCs also exhibit a powerful immunosuppressive activity and play important role in supporting hematopoiesis.</p>
Purification:	The antibody was purified by affinity chromatography, and conjugated with PE under optimal

## Product Details

---

conditions. The solution is free of unconjugated PE and unconjugated antibody.

## Target Details

---

Target: Musculin (MSC)

Alternative Name: MSC ([MSC Products](#))

## Application Details

---

Application Notes: Optimal working dilution should be determined by the investigator.

Restrictions: For Research Use only

## Handling

---

Buffer: Phosphate-buffered solution, pH 7.2, containing 0.09 % sodium azide and 0.2 % (w/v) BSA .

Preservative: Sodium azide

Precaution of Use: This product contains Sodium azide: a POISONOUS AND HAZARDOUS SUBSTANCE which should be handled by trained staff only.

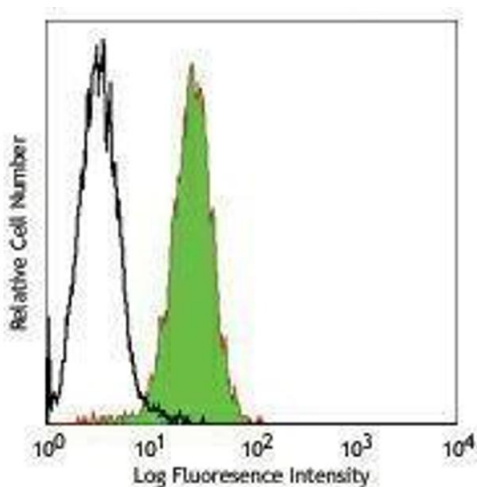
Handling Advice: Protect from prolonged exposure to light. Do not freeze.

Storage: 4 °C

Storage Comment: The antibody solution should be stored undiluted between 2°C and 8°C.

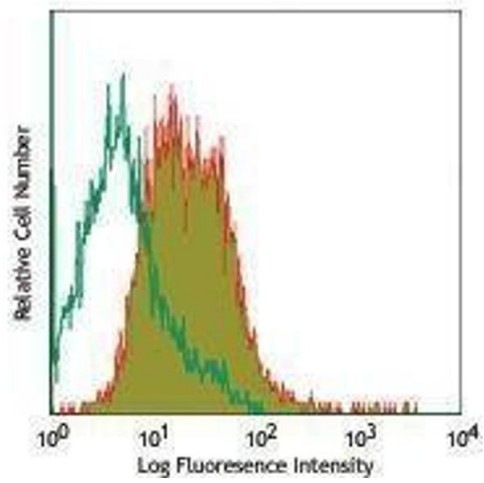
## Images

---



### Flow Cytometry

Image 1.



## Flow Cytometry

Image 2.