



Datasheet for ABIN2663852  
**anti-KLRF1 antibody (PE)**



[Go to Product page](#)

2 Images

Overview

Quantity:	100 tests
Target:	KLRF1
Reactivity:	Human
Host:	Mouse
Clonality:	Monoclonal
Conjugate:	This KLRF1 antibody is conjugated to PE
Application:	Flow Cytometry (FACS)

Product Details

Clone:	5D12
Isotype:	IgG1 kappa
Purification:	The antibody was purified by affinity chromatography, and conjugated with PE under optimal conditions. The solution is free of unconjugated PE and unconjugated antibody.

Target Details

Target:	KLRF1
Alternative Name:	NKp80 ( <a href="#">KLRF1 Products</a> )
Background:	NKp80, also known as killer cell lectin-like receptor subfamily F, member 1 (KLRF1), is a type II transmembrane C-type lectin-like receptor. NKp80 is expressed on the cell surface of nearly all NK cells as a homodimer with approximately 80 kD molecular mass. It is also found on a subset of effector memory CD8 T cells and $\gamma\delta$ T cells. NKp80 induces NK-cell mediated

## Target Details

cytotoxicity and cytokine production through interaction with its ligand, AICL (activation-induced C-type lectin), which is selectively expressed on myeloid cells.

## Application Details

Application Notes: Optimal working dilution should be determined by the investigator.

Restrictions: For Research Use only

## Handling

Buffer: Phosphate-buffered solution, pH 7.2, containing 0.09 % sodium azide and 0.2 % (w/v) BSA .

Preservative: Sodium azide

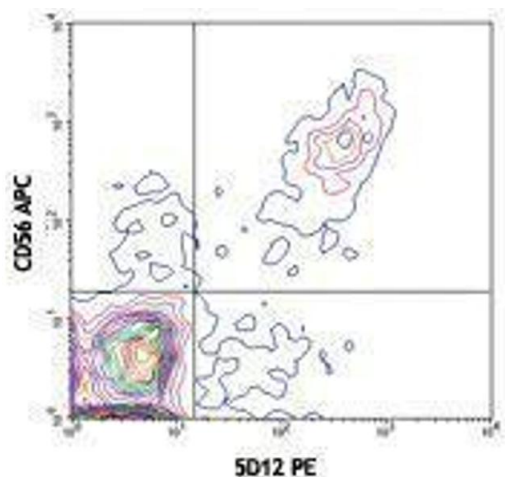
Precaution of Use: This product contains Sodium azide: a POISONOUS AND HAZARDOUS SUBSTANCE which should be handled by trained staff only.

Handling Advice: Protect from prolonged exposure to light. Do not freeze.

Storage: 4 °C

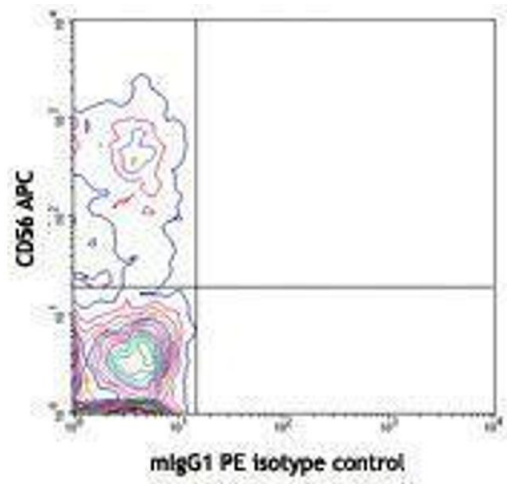
Storage Comment: The antibody solution should be stored undiluted between 2°C and 8°C.

## Images



### Flow Cytometry

Image 1.



Flow Cytometry

Image 2.