

Datasheet for ABIN2663858
anti-NOTCH2 antibody (PE)



[Go to Product page](#)

2 Images

Overview

Quantity:	100 tests
Target:	NOTCH2
Reactivity:	Human
Host:	Mouse
Clonality:	Monoclonal
Conjugate:	This NOTCH2 antibody is conjugated to PE
Application:	Flow Cytometry (FACS), Functional Studies (Func)

Product Details

Clone:	MHN2-25
Isotype:	IgG2a kappa
Purification:	The antibody was purified by affinity chromatography, and conjugated with PE under optimal conditions. The solution is free of unconjugated PE and unconjugated antibody.

Target Details

Target:	NOTCH2
Alternative Name:	Notch 2 (NOTCH2 Products)
Background:	The Notch receptors are a type I transmembrane protein family that share structural characteristics including an extracellular domain consisting of multiple epidermal growth factor-like (EGF) repeats, and an intracellular domain consisting of multiple, different domain types. They are highly conserved from invertebrates to mammals. Notch 1 and Notch 2 exhibit

Target Details

the highest structural similarity among the four mammalian Notch receptors (Notch 1-4). Notch1 and Notch 2 are reported to be functionally redundant. Notch 2 is expressed by Pre-B cells, double negative, and CD8 single positive thymocytes, brain, and lung cells. Notch 2 functions as a receptor for Jagged and Delta ligands and may play a role in vascular, renal and hepatic development.

Pathways: [Notch Signaling](#), [Stem Cell Maintenance](#)

Application Details

Application Notes: Optimal working dilution should be determined by the investigator.

Restrictions: For Research Use only

Handling

Buffer: Phosphate-buffered solution, pH 7.2, containing 0.09 % sodium azide and 0.2 % (w/v) BSA .

Preservative: Sodium azide

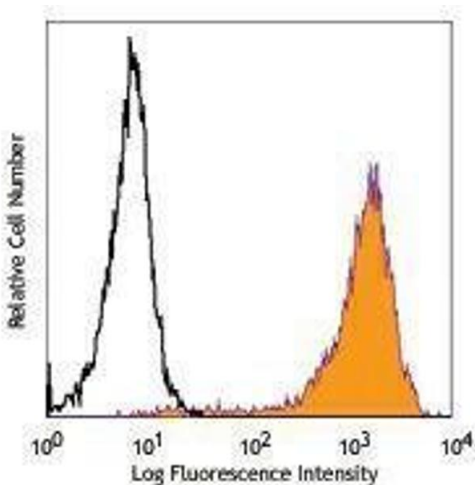
Precaution of Use: This product contains Sodium azide: a POISONOUS AND HAZARDOUS SUBSTANCE which should be handled by trained staff only.

Handling Advice: Protect from prolonged exposure to light. Do not freeze.

Storage: 4 °C

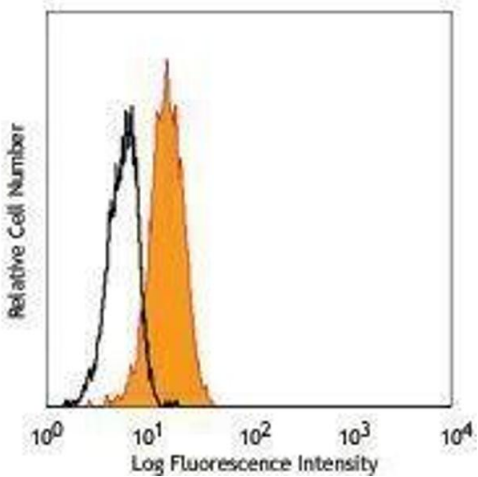
Storage Comment: The antibody solution should be stored undiluted between 2°C and 8°C.

Images



Flow Cytometry

Image 1.



Flow Cytometry

Image 2.