

Datasheet for ABIN2663873
anti-Raet1d antibody (PE)



[Go to Product page](#)

1 Image

Overview

Quantity:	50 µg
Target:	Raet1d
Reactivity:	Mouse
Host:	Mouse
Clonality:	Monoclonal
Conjugate:	This Raet1d antibody is conjugated to PE
Application:	Flow Cytometry (FACS)

Product Details

Clone:	Charlotte d1-23
Isotype:	IgG1
Purification:	The antibody was purified by affinity chromatography, and conjugated with PE under optimal conditions. The solution is free of unconjugated PE and unconjugated antibody.

Target Details

Target:	Raet1d
Alternative Name:	RAE-1delta
Background:	RAE-1δ is one of the five RAE-1 family, GPI-linked membrane protein consisting of alpha, beta, gamma, delta, and epsilon. They are strong homology within the family, related by 92 % -95 % sequence identity. They are distantly related to MHC class I proteins. RAE-1 proteins are abundantly expressed in fetal tissues, but not in normal adult tissue. They are constitutively

Target Details

expressed on some tumors and can be induced by retinoid acid. Its ligand NKG2D is found on NK cells, many transformed cell lines, and LPS-stimulated peritoneal macrophages. The interaction of NKG2D with RAE-1 transmits stimulatory signals to NK cells and other hematopoietic cells, leading to enhanced proliferation, cytokine secretion and target killing. They are involved in the regulation of innate and immune cytotoxic responses to tumors, pathogen-infected cells, and autoimmune diseases.

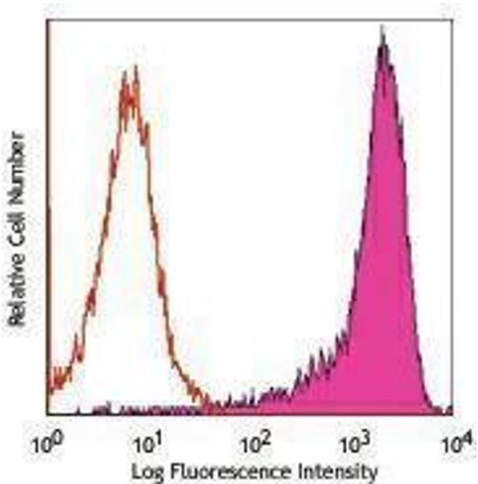
Application Details

Application Notes:	Optimal working dilution should be determined by the investigator.
Restrictions:	For Research Use only

Handling

Concentration:	0.2 mg/mL
Buffer:	Phosphate-buffered solution, pH 7.2, containing 0.09 % sodium azide.
Preservative:	Sodium azide
Precaution of Use:	This product contains Sodium azide: a POISONOUS AND HAZARDOUS SUBSTANCE which should be handled by trained staff only.
Handling Advice:	Protect from prolonged exposure to light. Do not freeze.
Storage:	4 °C
Storage Comment:	The antibody solution should be stored undiluted between 2°C and 8°C.

Images



Flow Cytometry

Image 1.