

Datasheet for ABIN2663874  
**anti-Raet1c antibody (PE)**[Go to Product page](#)

## 1 Image

## Overview

Quantity:	50 µg
Target:	Raet1c
Reactivity:	Mouse
Host:	Rat
Clonality:	Monoclonal
Conjugate:	This Raet1c antibody is conjugated to PE
Application:	Flow Cytometry (FACS)

## Product Details

Clone:	CX1
Isotype:	IgG2b kappa
Purification:	The antibody was purified by affinity chromatography, and conjugated with PE under optimal conditions. The solution is free of unconjugated PE and unconjugated antibody.

## Target Details

Target:	Raet1c
Alternative Name:	RAE-1gamma ( <a href="#">Raet1c Products</a> )
Background:	RAE-1 gamma is one of the five member RAE-family. Together with H60 they were identified as ligands for the mouse NKG2D molecules. Expression of RAE-1 is low or absent in normal adult tissue, but can be upregulated by retinoid acid and constitutively expressed on some tumors. This antibody has weak crossreactivity with RAE-1 alpha and RAE-1 beta.

Target Details

Pathways:

Cellular Response to Molecule of Bacterial Origin

Application Details

Application Notes:

Optimal working dilution should be determined by the investigator.

Restrictions:

For Research Use only

Handling

Concentration:

0.2 mg/mL

Buffer:

Phosphate-buffered solution, pH 7.2, containing 0.09 % sodium azide.

Preservative:

Sodium azide

Precaution of Use:

This product contains Sodium azide: a POISONOUS AND HAZARDOUS SUBSTANCE which should be handled by trained staff only.

Handling Advice:

Protect from prolonged exposure to light. Do not freeze.

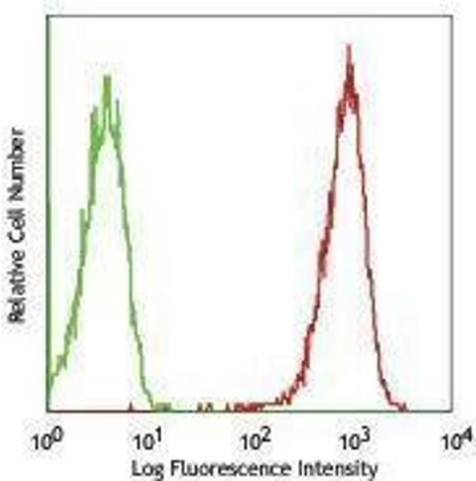
Storage:

4 °C

Storage Comment:

The antibody solution should be stored undiluted between 2°C and 8°C.

Images



Flow Cytometry

Image 1.