



[Go to Product page](#)

Datasheet for ABIN2663887  
**anti-SUSD2 antibody (PE)**

2 Images

### Overview

Quantity:	100 tests
Target:	SUSD2
Reactivity:	Human
Host:	Mouse
Clonality:	Monoclonal
Conjugate:	This SUSD2 antibody is conjugated to PE
Application:	Biochemical Assay (BCA)

### Product Details

Clone:	W5C5
Isotype:	IgG1 kappa
Characteristics:	<p>The W5C5 antibody reacts with SUSD2 (sushi domain containing 2) which is expressed by bone marrow mesenchymal stem cells, vessel-surrounding smooth muscle cells, and a few neoplastic cell lines. SUSD2 is a recently identified type I transmembrane protein of 820 amino acids consisting of a large extracellular region containing a Somatomedin B (SMB), an Adhesion-associated domain in MUC4 and Other Proteins (AMOP), a von Willebrand factor (vWF), and a F1c Sushi domain. Mesenchymal stem cells (MSCs) were originally named bone marrow stromal cells. They are a population of adult stem cells with a large capacity for self-renewal and multipotency for differentiation into a variety of cell types including osteoblasts, chondrocytes, myocytes, adipocytes, <math>\beta</math>-pancreatic islets cells, and certain neuronal cells. MSCs reside in many cells and tissues, such as bone marrow, placenta, adipose tissue, adult peripheral blood, fetal blood, skin, liver, and lung. Besides their plasticity for tissue repair, MSCs</p>

## Product Details

---

also exhibit powerful immunosuppressive activity and play an important role in supporting hematopoiesis.

**Purification:** The antibody was purified by affinity chromatography, and conjugated with PE under optimal conditions. The solution is free of unconjugated PE and unconjugated antibody.

## Target Details

---

**Target:** SUSD2

**Alternative Name:** SUSD2 ([SUSD2 Products](#))

## Application Details

---

**Application Notes:** Optimal working dilution should be determined by the investigator.

**Restrictions:** For Research Use only

## Handling

---

**Buffer:** Phosphate-buffered solution, pH 7.2, containing 0.09 % sodium azide and 0.2 % (w/v) BSA .

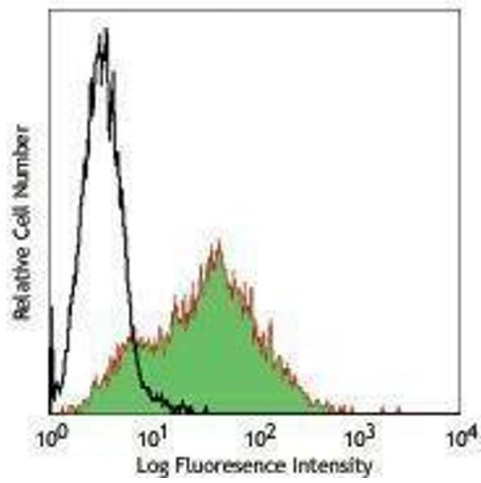
**Preservative:** Sodium azide

**Precaution of Use:** This product contains Sodium azide: a POISONOUS AND HAZARDOUS SUBSTANCE which should be handled by trained staff only.

**Handling Advice:** Protect from prolonged exposure to light. Do not freeze.

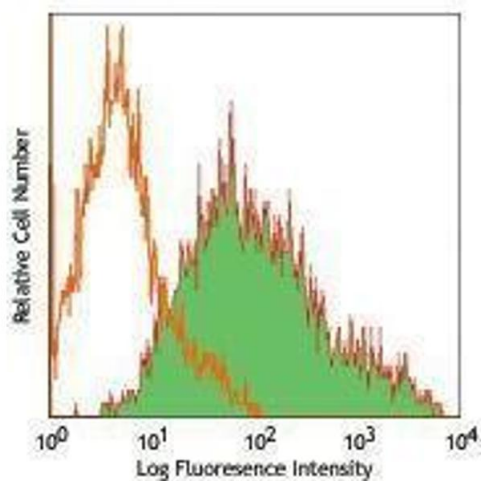
**Storage:** 4 °C

**Storage Comment:** The antibody solution should be stored undiluted between 2°C and 8°C.



### Flow Cytometry

Image 1.



### Flow Cytometry

Image 2.