

Datasheet for ABIN2663929  
**anti-TIMD2 antibody (PE)**[Go to Product page](#)

## 1 Image

## Overview

Quantity:	100 µg
Target:	TIMD2
Reactivity:	Mouse
Host:	Mouse
Clonality:	Monoclonal
Conjugate:	This TIMD2 antibody is conjugated to PE
Application:	Flow Cytometry (FACS)

## Product Details

Clone:	F37-2C4
Isotype:	IgG1 kappa
Purification:	The antibody was purified by affinity chromatography, and conjugated with PE under optimal conditions. The solution is free of unconjugated PE and unconjugated antibody.

## Target Details

Target:	TIMD2
Alternative Name:	Tim-2 ( <a href="#">TIMD2 Products</a> )
Background:	Tim-2 is a transmembrane protein known as T cell immunoglobulin and mucin domain containing protein-2. It is expressed on activated T cells and preferentially on differentiated Th2 cells. Sema4A is the ligand of Tim-2. A blockade of Tim-2/Tim-2 ligand interaction results in T cell hyperproliferation and Th2 cytokine production. Tim-2 plays a critical role in the

Target Details

development of atopic disease and other Th2-biased immune responses.

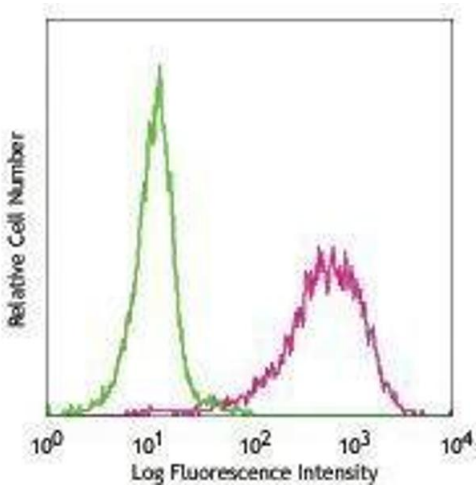
Application Details

Application Notes:	Optimal working dilution should be determined by the investigator.
Restrictions:	For Research Use only

Handling

Concentration:	0.2 mg/mL
Buffer:	Phosphate-buffered solution, pH 7.2, containing 0.09 % sodium azide.
Preservative:	Sodium azide
Precaution of Use:	This product contains Sodium azide: a POISONOUS AND HAZARDOUS SUBSTANCE which should be handled by trained staff only.
Handling Advice:	Protect from prolonged exposure to light. Do not freeze.
Storage:	4 °C
Storage Comment:	The antibody solution should be stored undiluted between 2°C and 8°C.

Images



Flow Cytometry

Image 1.