



Datasheet for ABIN2664053  
**anti-WDHD1 antibody**



[Go to Product page](#)

2 Images

Overview

Quantity:	100 µg
Target:	WDHD1
Reactivity:	Human, Mouse
Host:	Mouse
Clonality:	Monoclonal
Conjugate:	This WDHD1 antibody is un-conjugated
Application:	Western Blotting (WB), Immunofluorescence (IF)

Product Details

Clone:	20G10
Isotype:	IgG2a kappa
Characteristics:	<p>The 20G10 monoclonal antibody recognizes both human and mouse AND-1 (WDHD1) also known as WD repeat and HMG box DNA binding protein 1, acidic nucleoplasmic DNA-binding protein 1. AND-1 (WDHD1) is a nuclear and nucleolar protein that contains multiple WD40 repeats, and one HMG region. AND-1 (WDHD1) has a predicted molecular weight of 126 kD and can form homodimers. WDHD1 is expressed in the brain, epidermis, liver, and stomach. During mitosis, AND-1 (WDHD1) is transiently expressed in nucleoplasm. AND-1 (WDHD1) can bind to DNA with high affinity and may be involved in protein-protein interactions. The role of AND-1 (WDHD1) is thought to be chromatin assembly, transcription and DNA replication. AND-1 (WDHD1) has been reported to be phosphorylated on S1041. The 20G10 antibody has been shown to be useful for Western blotting.</p>
Purification:	The antibody was purified by affinity chromatography.

## Target Details

---

Target: WDHD1

Alternative Name: AND-1 ([WDHD1 Products](#))

## Application Details

---

Application Notes: Optimal working dilution should be determined by the investigator.

Restrictions: For Research Use only

## Handling

---

Concentration: 0.5 mg/mL

Buffer: Phosphate-buffered solution, pH 7.2, containing 0.09 % sodium azide.

Preservative: Sodium azide

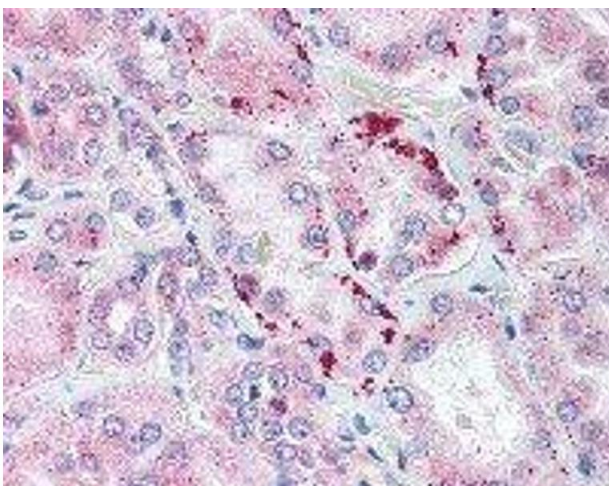
Precaution of Use: This product contains Sodium azide: a POISONOUS AND HAZARDOUS SUBSTANCE which should be handled by trained staff only.

Storage: 4 °C

Storage Comment: The antibody solution should be stored undiluted between 2°C and 8°C.

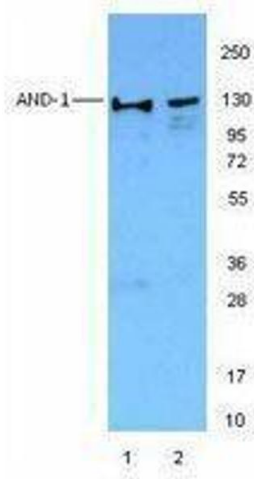
## Images

---



### Immunohistochemistry

**Image 1.**



## Western Blotting

Image 2.