

Datasheet for ABIN2664266
anti-KLRC1 antibody



[Go to Product page](#)

2 Images

Overview

Quantity:	500 µg
Target:	KLRC1
Reactivity:	Mouse
Host:	Mouse
Clonality:	Monoclonal
Conjugate:	This KLRC1 antibody is un-conjugated
Application:	Flow Cytometry (FACS)

Product Details

Clone:	16A11
Isotype:	IgG2b kappa
Purification:	The antibody was purified by affinity chromatography.

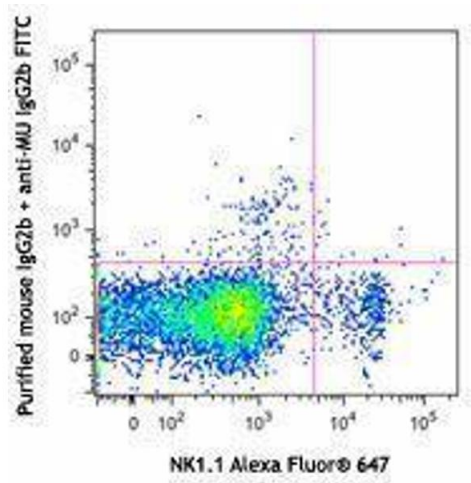
Target Details

Target:	KLRC1
Alternative Name:	CD159a (KLRC1 Products)
Background:	CD159a, also known as NKG2A or KLRC1 (killer cell lectin-like receptor subfamily C, member 1), is a 43 kD type II transmembrane protein with extracellular C-type lectin domains. It belongs to the killer cell lectin-like receptor family also known as the NKG2 family. It is expressed on NK and NKT cells and activated CD8+ T cells. NKG2A binds to non-classical MHC class I molecule Qa-1 and causes inhibition of NK cell-mediated target-cell lysis.

Application Details

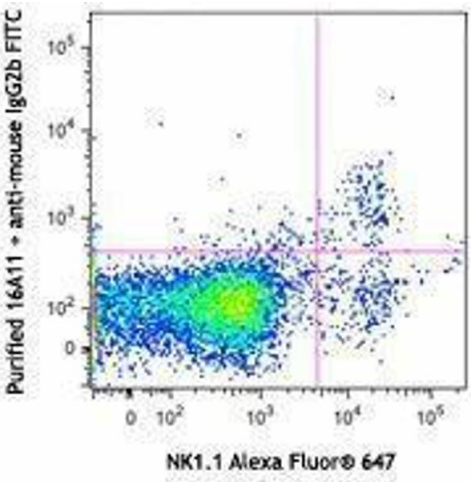
Application Notes:	Optimal working dilution should be determined by the investigator.
Restrictions:	For Research Use only
Handling	
Concentration:	0.5 mg/mL
Buffer:	Phosphate-buffered solution, pH 7.2, containing 0.09 % sodium azide.
Preservative:	Sodium azide
Precaution of Use:	This product contains Sodium azide: a POISONOUS AND HAZARDOUS SUBSTANCE which should be handled by trained staff only.
Storage:	4 °C
Storage Comment:	The antibody solution should be stored undiluted between 2°C and 8°C.

Images



Flow Cytometry

Image 1.



Flow Cytometry

Image 2.