



[Go to Product page](#)

Datasheet for ABIN2664371

anti-CD200 Receptor 3 (CD200R3) antibody

2 Images

Overview

Quantity:	50 µg
Target:	CD200 Receptor 3 (CD200R3)
Reactivity:	Mouse
Host:	Rat
Clonality:	Monoclonal
Conjugate:	Un-conjugated
Application:	Intracellular Flow Cytometry (ICFC)

Product Details

Clone:	Ba13
Isotype:	IgG2a kappa
Purification:	The antibody was purified by affinity chromatography.

Target Details

Target:	CD200 Receptor 3 (CD200R3)
Alternative Name:	CD200R3 (CD200R3 Products)
Background:	CD200R3, also known as CD200RLb and OX-2 Receptor 3, is a disulfide-linked dimeric CD200R-like receptor which belongs to immunoglobulin superfamily. Its positively charged amino acid lysine associates with ITAM- or YxxM motif-bearing adaptor molecules such as DAP12, DAP10, FcRγ, and CD3ζ. CD200R3 functions as an activating receptor to regulate IgE independent immune response.

Application Details

Application Notes: Optimal working dilution should be determined by the investigator.

Restrictions: For Research Use only

Handling

Concentration: 0.5 mg/mL

Buffer: Phosphate-buffered solution, pH 7.2, containing 0.09 % sodium azide.

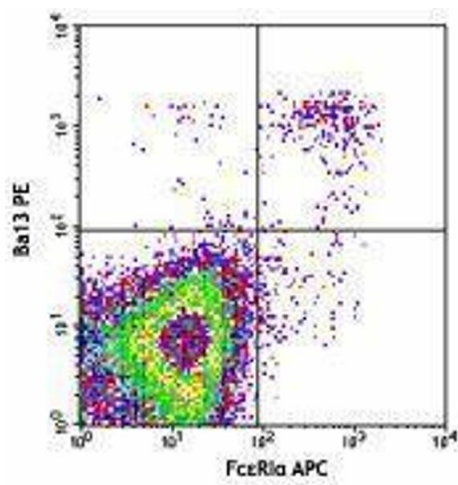
Preservative: Sodium azide

Precaution of Use: This product contains Sodium azide: a POISONOUS AND HAZARDOUS SUBSTANCE which should be handled by trained staff only.

Storage: 4 °C

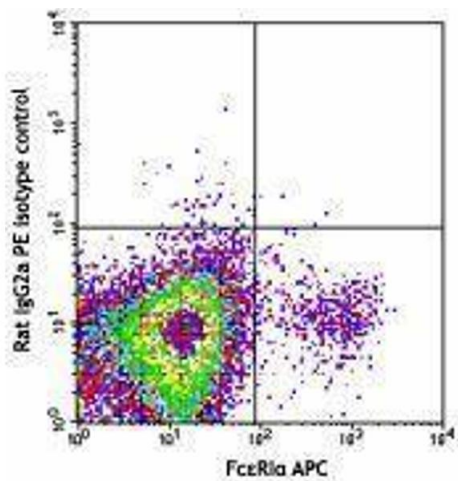
Storage Comment: The antibody solution should be stored undiluted between 2°C and 8°C.

Images



Flow Cytometry

Image 1.



Flow Cytometry

Image 2.