

Datasheet for ABIN2664383

**anti-Macrophage Mannose Receptor 1 antibody**[Go to Product page](#)**2** Images

## Overview

Quantity:	100 µg
Target:	Macrophage Mannose Receptor 1 (MRC1)
Reactivity:	Human
Host:	Mouse
Clonality:	Monoclonal
Conjugate:	This Macrophage Mannose Receptor 1 antibody is un-conjugated
Application:	Multiplex Assay (MA)

## Product Details

Clone:	15-2
Isotype:	IgG1 kappa
Purification:	The antibody was purified by affinity chromatography.

## Target Details

Target:	Macrophage Mannose Receptor 1 (MRC1)
Alternative Name:	CD206 ( <a href="#">MRC1 Products</a> )
Background:	Macrophage mannose receptor (MMR) is a 162-175 kD type I membrane protein also known as CD206, MRC1, or mannose receptor (MR). It is a pattern recognition receptor (PRR) that belongs to C-type lectin superfamily. MMR is expressed on macrophages, dendritic cells, and hepatic or lymphatic endothelial cells, but not on monocytes. MMR recognizes a range of microbial carbohydrates bearing mannose, fucose, or N-acetyl glucosamine. MMR mediates

## Target Details

endocytosis and phagocytosis, induces activation of macrophages and antigen presentation, plays an important role in host defense, and provides a link between innate and adaptive immunity.

## Application Details

Application Notes: Optimal working dilution should be determined by the investigator.

Restrictions: For Research Use only

## Handling

Concentration: 1.0 mg/mL

Buffer: Phosphate-buffered solution, pH 7.2, containing 0.09 % sodium azide and EDTA.

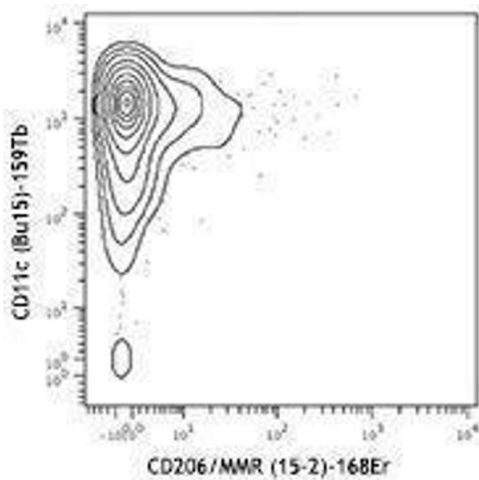
Preservative: Sodium azide

Precaution of Use: This product contains Sodium azide: a POISONOUS AND HAZARDOUS SUBSTANCE which should be handled by trained staff only.

Storage: 4 °C

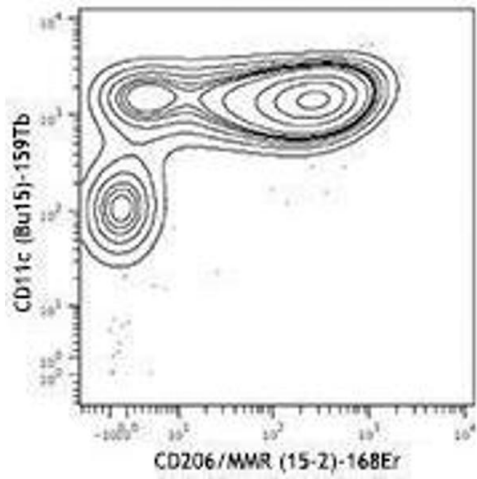
Storage Comment: The antibody solution should be stored undiluted between 2°C and 8°C.

## Images



### Flow Cytometry

Image 1.



## Flow Cytometry

Image 2.