

Datasheet for ABIN2664534
anti-CD300LG antibody[Go to Product page](#)

1 Image

Overview

Quantity:	100 µg
Target:	CD300LG (TREM4)
Reactivity:	Mouse
Host:	Rat
Clonality:	Monoclonal
Conjugate:	This CD300LG antibody is un-conjugated
Application:	Immunofluorescence (IF)

Product Details

Clone:	ZAQ5
Isotype:	IgG2a kappa
Purification:	The antibody was purified by affinity chromatography.

Target Details

Target:	CD300LG (TREM4)
Alternative Name:	CD300LG (TREM4 Products)
Background:	CD300LG, also known as nepmucin (a not expressed in Peyer's patches mucin), is a member of the CD300 antigen like family. It is a 50-95 kD glycoprotein with one IgV like domain and one mucin like domain and four isoforms are produced by alternative splicing. Nepmucin is expressed on high endothelial venules (HEV) from lymph nodes, but is absent on HEV from the Peyer's patches. CD300LG mediates lymphocyte adhesion through the interaction of its Ig

Target Details

domain with ICAM-1 and rolling on HEVs through the interaction of its mucin like domain with L-selectine. Also, it may play a role in the molecular transcytosis across the capillary endothelium.

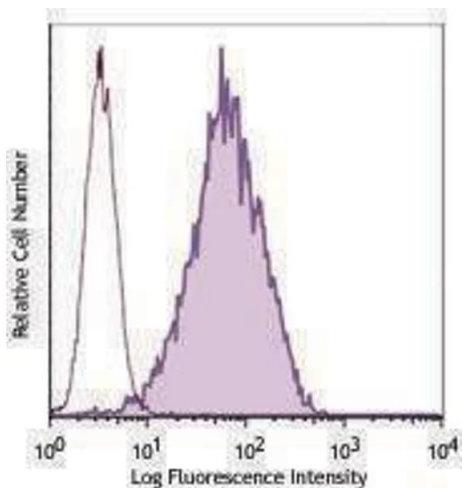
Application Details

Application Notes:	Optimal working dilution should be determined by the investigator.
Restrictions:	For Research Use only

Handling

Concentration:	0.5 mg/mL
Buffer:	Phosphate-buffered solution, pH 7.2, containing 0.09 % sodium azide.
Preservative:	Sodium azide
Precaution of Use:	This product contains Sodium azide: a POISONOUS AND HAZARDOUS SUBSTANCE which should be handled by trained staff only.
Storage:	4 °C
Storage Comment:	The antibody solution should be stored undiluted between 2°C and 8°C.

Images



Flow Cytometry

Image 1.