

Datasheet for ABIN2664609

anti-CRTAM antibody**2** Images[Go to Product page](#)

Overview

| | |
|--------------|--|
| Quantity: | 100 µg |
| Target: | CRTAM |
| Reactivity: | Mouse |
| Host: | Rat |
| Clonality: | Monoclonal |
| Conjugate: | This CRTAM antibody is un-conjugated |
| Application: | ELISA (Detection), ELISpot (Detection) (ELISPOT (Detection)) |

Product Details

| | |
|---------------|---|
| Clone: | 11-5-CRTAM |
| Isotype: | IgG2a kappa |
| Purification: | The antibody was purified by affinity chromatography. |

Target Details

| | |
|-------------------|---|
| Target: | CRTAM |
| Alternative Name: | CD355 (CRTAM Products) |
| Background: | <p>Class-I MHC-restricted T-cell associated molecule (CRTAM), designated as CD355, is an Ig domain like type I transmembrane receptor, which belongs to the nectin family. In the immune system, CRTAM is strictly expressed on activated NK cells and activated CD8-positive T cells.</p> <p>By binding its ligand Nectin-like molecule 2 (Nect2), CRTAM plays an important role in mediating cell adhesion and migration.</p> |

Target Details

Pathways: [Regulation of Leukocyte Mediated Immunity](#), [Positive Regulation of Immune Effector Process](#), [Activated T Cell Proliferation](#)

Application Details

Application Notes: Optimal working dilution should be determined by the investigator.

Restrictions: For Research Use only

Handling

Concentration: 0.5 mg/mL

Buffer: Phosphate-buffered solution, pH 7.2, containing 0.09 % sodium azide.

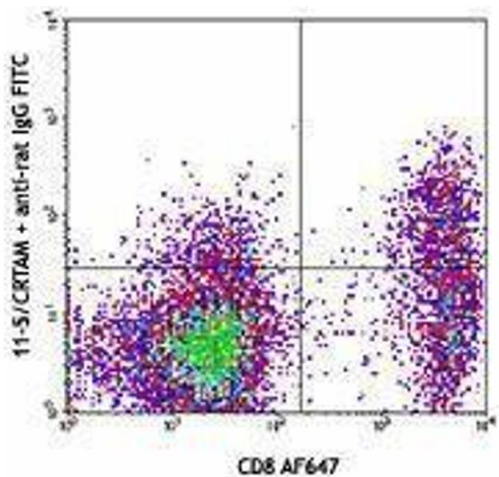
Preservative: Sodium azide

Precaution of Use: This product contains Sodium azide: a POISONOUS AND HAZARDOUS SUBSTANCE which should be handled by trained staff only.

Storage: 4 °C

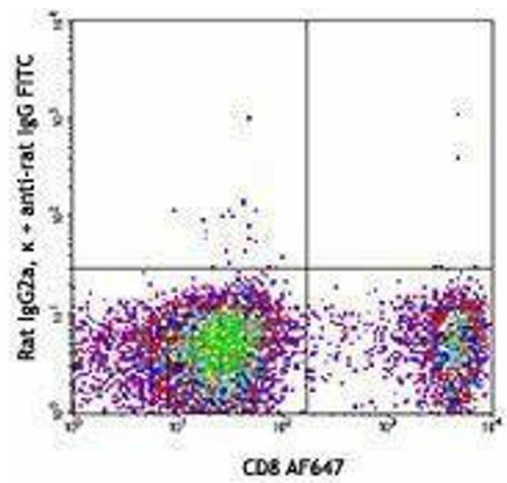
Storage Comment: The antibody solution should be stored undiluted between 2°C and 8°C.

Images



Flow Cytometry

Image 1.



Flow Cytometry

Image 2.