

Datasheet for ABIN2664625
anti-CLEC4A antibody



[Go to Product page](#)

1 Image

Overview

Quantity:	100 µg
Target:	CLEC4A
Reactivity:	Human
Host:	Mouse
Clonality:	Monoclonal
Conjugate:	This CLEC4A antibody is un-conjugated
Application:	ELISA (Detection), ELISpot (Detection) (ELISPOT (Detection))

Product Details

Clone:	9E8
Isotype:	IgG1 kappa
Purification:	The antibody was purified by affinity chromatography.

Target Details

Target:	CLEC4A
Alternative Name:	CD367 (CLEC4A Products)
Background:	CD367 (CLEC4A), also known as lectin-like immunoreceptor (LLIR) and dendritic cell immunoreceptor (DCIR), is a type II transmembrane protein belonging to C-type lectin domain family, and was previously designated as CLECSF6. It contains one carbohydrate recognition domain in its C-terminal extracellular domain and an immunoreceptor tyrosine-based inhibitory motif (ITIM) in its cytoplasmic domain. CLEC4A is mainly expressed on monocytes,

Target Details

macrophages, dendritic cells, neutrophils, and B cells. It is also found on the surface of CD4+ T cells in rheumatoid arthritis (RA) patients. CLEC4A has been reported to function as a receptor for HIV, cross-present and cross-prime human CD8+ T cells. It might also function as a negative player by recruiting the SHP-1 or/and SHP-2 phosphatase through its immunoreceptor tyrosine-based inhibitory motif (ITIM).

Application Details

Application Notes: Optimal working dilution should be determined by the investigator.

Restrictions: For Research Use only

Handling

Concentration: 0.5 mg/mL

Buffer: Phosphate-buffered solution, pH 7.2, containing 0.09 % sodium azide.

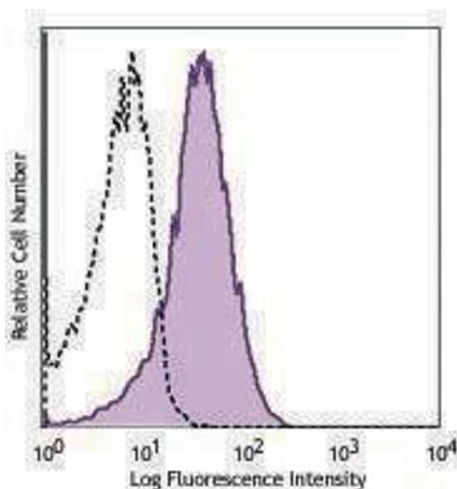
Preservative: Sodium azide

Precaution of Use: This product contains Sodium azide: a POISONOUS AND HAZARDOUS SUBSTANCE which should be handled by trained staff only.

Storage: 4 °C

Storage Comment: The antibody solution should be stored undiluted between 2°C and 8°C.

Images



Flow Cytometry

Image 1.