

Datasheet for ABIN2664895

**anti-CX3CR1 antibody****2** Images[Go to Product page](#)

## Overview

Quantity:	100 µg
Target:	CX3CR1
Reactivity:	Human
Host:	Mouse
Clonality:	Monoclonal
Application:	Flow Cytometry (FACS), Immunofluorescence (IF), Intracellular Flow Cytometry (ICFC)

## Product Details

Clone:	K0124E1
Isotype:	IgG1 kappa
Cross-Reactivity:	Cynomolgus, Rhesus Monkey
Purification:	The antibody was purified by affinity chromatography.

## Target Details

Target:	CX3CR1
Alternative Name:	CX3CR1 ( <a href="#">CX3CR1 Products</a> )
Background:	CX3CR1 is a G-protein-coupled seven-transmembrane chemokine receptor, also known as GPR13 or V28. It is expressed on NK cells, T cell subset, monocytes/macrophages, dendritic cells, and some malignant epithelial cells. CX3CL1 (known as fractalkine, neurotactin) is the ligand of CX3CR1. CX3CL1 is a unique transmembrane molecule with a CX3C-motif chemokine domain and a mucin-like stalk. CX3CL1 is expressed by activated-endothelial cells, neurons, and

Target Details

astrocytes. The interaction of CX3CR1 and its ligand mediates cell firm adhesion and migration.

Pathways: [Cellular Response to Molecule of Bacterial Origin](#)

Application Details

Application Notes: Optimal working dilution should be determined by the investigator.

Restrictions: For Research Use only

Handling

Concentration: 0.5 mg/mL

Buffer: Phosphate-buffered solution, pH 7.2, containing 0.09 % sodium azide.

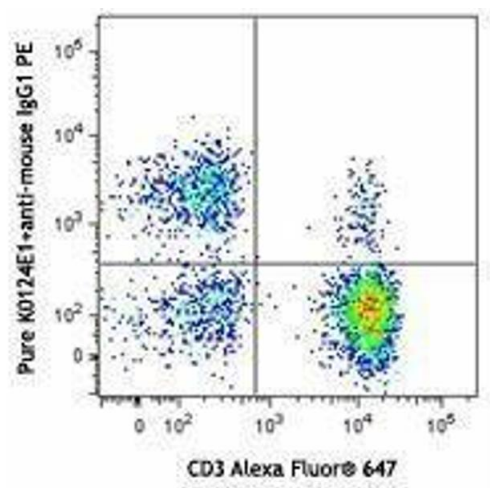
Preservative: Sodium azide

Precaution of Use: This product contains Sodium azide: a POISONOUS AND HAZARDOUS SUBSTANCE which should be handled by trained staff only.

Storage: 4 °C

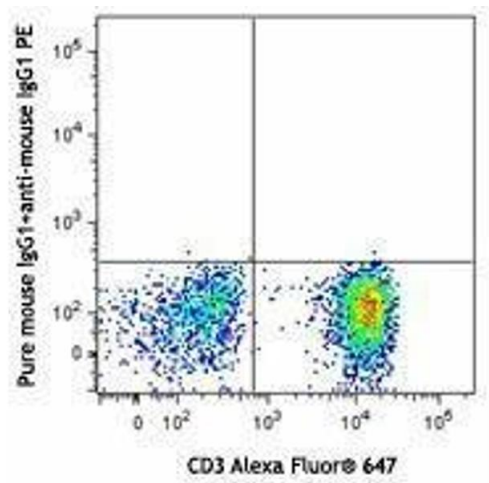
Storage Comment: The antibody solution should be stored undiluted between 2°C and 8°C.

Images



Flow Cytometry

Image 1.



Flow Cytometry

Image 2.