



[Go to Product page](#)

Datasheet for ABIN2664915  
**anti-Cytokeratin 1 antibody**

3 Images

### Overview

Quantity:	100 µg
Target:	Cytokeratin 1 (KRT1)
Reactivity:	All Species, Various Species
Host:	Mouse
Clonality:	Monoclonal
Conjugate:	This Cytokeratin 1 antibody is un-conjugated
Application:	Biochemical Assay (BCA)

### Product Details

Clone:	C-11
Isotype:	IgG1 kappa
Cross-Reactivity (Details):	Reacts with conserved epitope in all species tested. Recognizes cytokeratin 4, 5, 6, 8, 10, 13, and 18.
Purification:	The antibody was purified by affinity chromatography.

### Target Details

Target:	Cytokeratin 1 (KRT1)
Alternative Name:	Cytokeratin ( <a href="#">KRT1 Products</a> )
Background:	Cytokeratins are intermediate filament proteins that are widely expressed in many tissues. These proteins are vital components of the cytoskeleton and interact with a number of other proteins. Cytokeratins are usually found in the cytoplasm, although some cytokeratins can be

## Target Details

---

found in the nucleus and the nucleolus.

## Application Details

---

Application Notes: Optimal working dilution should be determined by the investigator.

Restrictions: For Research Use only

## Handling

---

Concentration: 0.5 mg/mL

Buffer: phosphate-buffered solution, pH 7.2, containing 0.09 % sodium azide at 0.5 mg/mL.

Preservative: Sodium azide

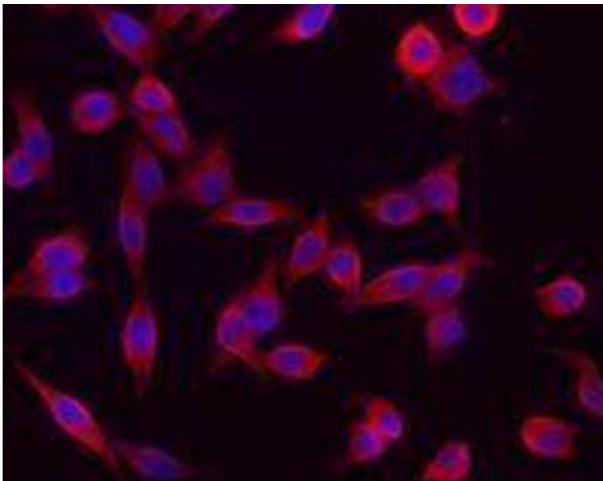
Precaution of Use: This product contains Sodium azide: a POISONOUS AND HAZARDOUS SUBSTANCE which should be handled by trained staff only.

Storage: 4 °C

Storage Comment: The antibody solution should be stored undiluted between 2°C and 8°C.

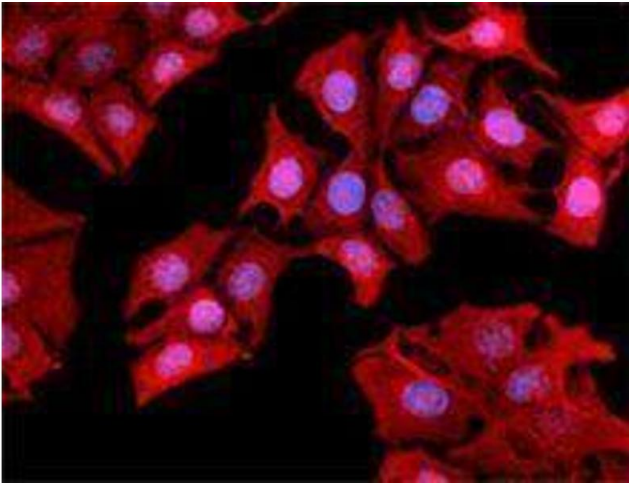
## Images

---



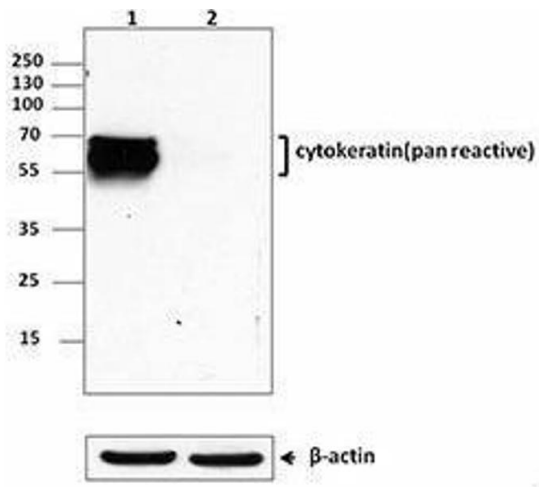
### Immunofluorescence

**Image 1.**



### Immunofluorescence

Image 2.



### Western Blotting

Image 3.