

Datasheet for ABIN2665147

anti-IL23 antibody

2 Images

[Go to Product page](#)

Overview

Quantity:	50 µg
Target:	IL23
Reactivity:	Mouse
Host:	Mouse
Clonality:	Monoclonal
Conjugate:	This IL23 antibody is un-conjugated
Application:	Flow Cytometry (FACS)

Product Details

Clone:	MMp19B2
Isotype:	IgG2b kappa
Purification:	The antibody was purified by affinity chromatography.

Target Details

Target:	IL23
Alternative Name:	IL-23 (IL23 Products)
Background:	Interleukin 23 (IL-23) is a heterodimeric cytokine composed of two disulfide-linked subunits, a p19 subunit that is unique to IL-23, and a p40 subunit that is shared with IL-12. IL-23 is secreted by activated macrophages and dendritic cells. Human and mouse p19 share 70 % aa sequence identity. The functional IL-23 receptor complex consists of two receptor subunits, a $\beta 1$ subunit shared with the IL-12 receptor (IL-12R $\beta 1$) and a $\beta 2$ -like subunit with STAT4 binding domain,

Target Details

termed the IL-23-specific receptor subunit (IL-23R).IL-23 has been shown to enhance IFN- γ production by memory T cells.Additionally, mouse IL-23 (but not IL-12) can activate mouse memory T cells to produce the potent proinflammatory cytokine IL-17.IL-23 has been shown to be upregulated in certain autoimmune diseases and promote immunity in response to some viral and mycobacterial infections.

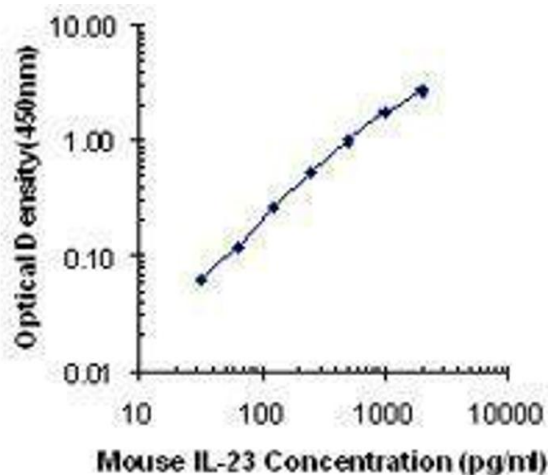
Application Details

Application Notes:	Optimal working dilution should be determined by the investigator.
Restrictions:	For Research Use only

Handling

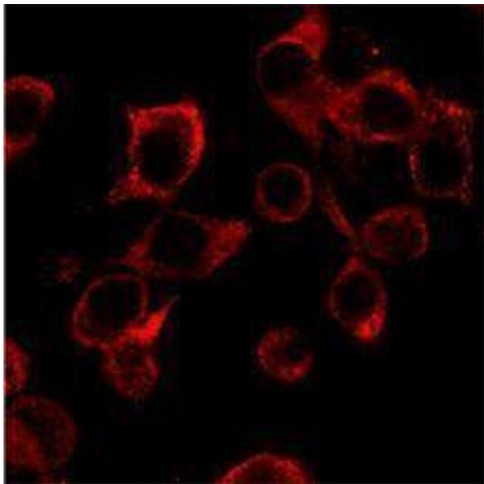
Concentration:	0.5 mg/mL
Buffer:	Phosphate-buffered solution, pH 7.2, containing 0.09 % sodium azide.
Preservative:	Sodium azide
Precaution of Use:	This product contains Sodium azide: a POISONOUS AND HAZARDOUS SUBSTANCE which should be handled by trained staff only.
Storage:	4 °C
Storage Comment:	The antibody solution should be stored undiluted between 2°C and 8°C.

Images



ELISA

Image 1.



Immunofluorescence

Image 2.