



[Go to Product page](#)

Datasheet for ABIN2665219

## anti-LAMP5 antibody

### 2 Images

#### Overview

Quantity:	100 µg
Target:	LAMP5
Reactivity:	Human
Host:	Mouse
Clonality:	Monoclonal
Conjugate:	This LAMP5 antibody is un-conjugated
Application:	Flow Cytometry (FACS)

#### Product Details

Clone:	124-40B
Isotype:	IgG1 kappa
Purification:	The antibody was purified by affinity chromatography.

#### Target Details

Target:	LAMP5
Alternative Name:	LAMP5 ( <a href="#">LAMP5 Products</a> )
Background:	Lysosome-associated membrane protein 5 (LAMP5), also known as BAD-LAMP, UNC-43, and C20orf103, is a new member of LAMP family. It is a transmembrane glycosylated protein localized in the ER-Golgi intermediate compartment (ERGIC). LAMP5 shares sequence and structural homology with the canonical LAMP1 (CD107a) and LAMP2 (CD107b) molecules, harbors an endosomal addressing signal within its cytoplasmic tail, and contains several

## Target Details

conserved cysteine residues that allow for the formation of particular structural loops known as LAMP folds. In mice, LAMP5 is expressed in postnatal cortical neurons of particular layers, where it is enriched in defined zones along neuronal projections. Human LAMP5, like its murine homolog, is principally expressed in brain, it is also specifically found in primary CD303 (BDCA-2)-positive pDCs (plasmacytoid dendritic cells). It represents a novel marker of human primary and transformed pDCs.

## Application Details

Application Notes: Optimal working dilution should be determined by the investigator.

Restrictions: For Research Use only

## Handling

Concentration: 0.5 mg/mL

Buffer: Phosphate-buffered solution, pH 7.2, containing 0.09 % sodium azide.

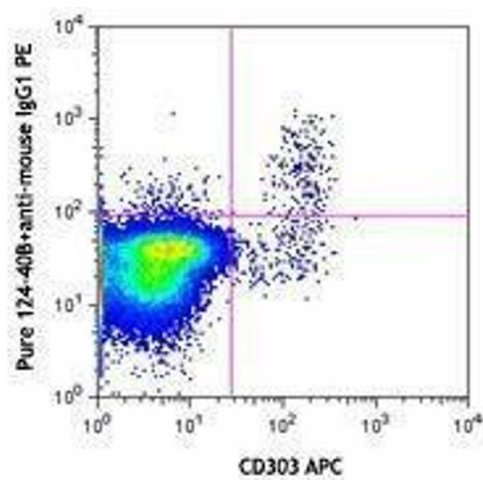
Preservative: Sodium azide

Precaution of Use: This product contains Sodium azide: a POISONOUS AND HAZARDOUS SUBSTANCE which should be handled by trained staff only.

Storage: 4 °C

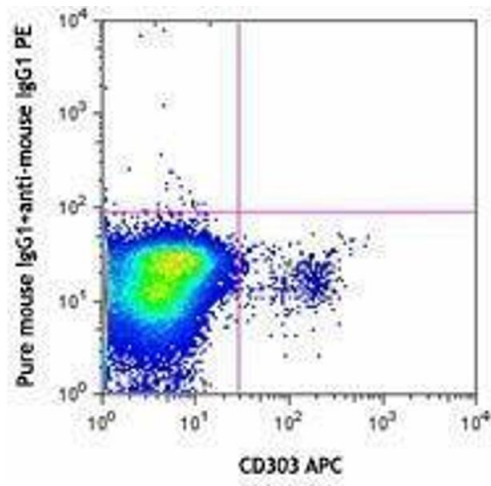
Storage Comment: The antibody solution should be stored undiluted between 2°C and 8°C.

## Images



### Flow Cytometry

Image 1.



Flow Cytometry

Image 2.