

Datasheet for ABIN2665246

anti-Klra7 antibody**2** Images[Go to Product page](#)

Overview

Quantity:	500 µg
Target:	Klra7
Reactivity:	Mouse
Host:	Mouse
Clonality:	Monoclonal
Conjugate:	This Klra7 antibody is un-conjugated
Application:	Flow Cytometry (FACS), Cytometry by Time of Flight (CyTOF)

Product Details

Clone:	AT8
Isotype:	IgG2a kappa
Purification:	The antibody was purified by affinity chromatography.

Target Details

Target:	Klra7
Alternative Name:	Ly49G (Klra7 Products)
Background:	Ly49G is a type II transmembrane protein belonging to the family of Ly49 proteins, each having specificity for a small repertoire of MHC I alleles that are generally recognized in a peptide-independent manner. The Ly49 family of MHC class I receptors shows a high degree of variability between mouse strains. It is expressed on a subset of NK cells and some NKT cell lines. The AT8 antibody reacts with the Ly49G receptor from BALB/c, 129/J, 129Sv/J, SJL,

Target Details

FVB/N, A/J, C3H/HeJ, C3H/HeNCr, CBA/J, and CBA/NCr mice.

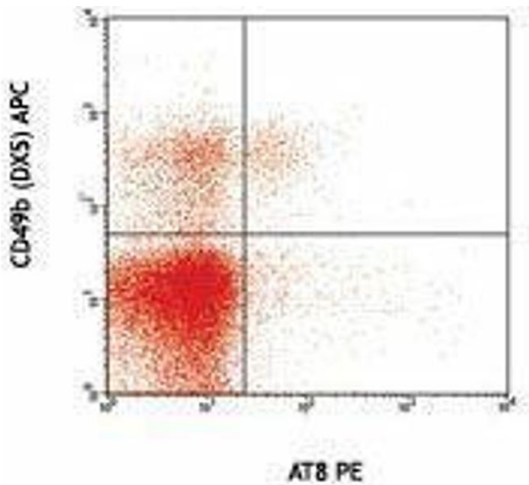
Application Details

Application Notes:	Optimal working dilution should be determined by the investigator.
Restrictions:	For Research Use only

Handling

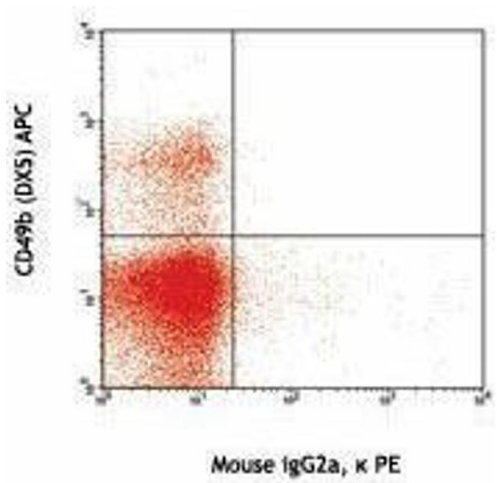
Concentration:	0.5 mg/mL
Buffer:	Phosphate-buffered solution, pH 7.2, containing 0.09 % sodium azide.
Preservative:	Sodium azide
Precaution of Use:	This product contains Sodium azide: a POISONOUS AND HAZARDOUS SUBSTANCE which should be handled by trained staff only.
Storage:	4 °C
Storage Comment:	The antibody solution should be stored undiluted between 2°C and 8°C.

Images



Flow Cytometry

Image 1.



Flow Cytometry

Image 2.