

Datasheet for ABIN2665339
anti-PRC1 antibody



[Go to Product page](#)

1 Image

Overview

Quantity:	100 µg
Target:	PRC1
Reactivity:	Human
Host:	Mouse
Clonality:	Monoclonal
Conjugate:	This PRC1 antibody is un-conjugated
Application:	Biochemical Assay (BCA)

Product Details

Clone:	6G2
Isotype:	IgG2b kappa
Purification:	The antibody was purified by affinity chromatography.

Target Details

Target:	PRC1
Alternative Name:	PRC1 (PRC1 Products)
Background:	PRC1 (also known as protein regulator of cytokinesis 1 and mitotic spindle-associated CDK substrate) is a member of the MAP65/ASE1 family with a molecular weight of approximately 72 kD. PRC1 localization changes with cell-cycle position and can be found in the nucleus, the mitotic spindle, and the cell mid-body. PRC1 is a mitotic spindle-associated CDK substrate protein required for cytokinesis and maintenance of the spindle midzone. PRC1 can be

Target Details

modified by phosphorylation and has been shown to interact with Cdc2 and Cdk2. The 6G2 antibody recognizes the human PRC1 protein and has been shown to be useful for Western blotting.

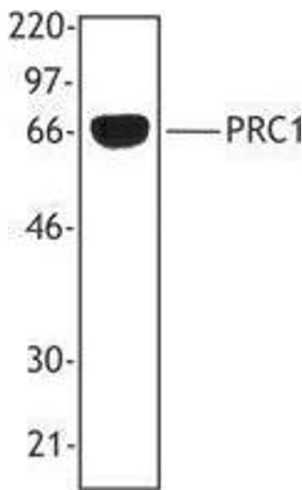
Application Details

Application Notes:	Optimal working dilution should be determined by the investigator.
Restrictions:	For Research Use only

Handling

Concentration:	0.5 mg/mL
Buffer:	phosphate-buffered solution, pH 7.2, containing 0.09 % sodium azide at 0.5 mg/mL.
Preservative:	Sodium azide
Precaution of Use:	This product contains Sodium azide: a POISONOUS AND HAZARDOUS SUBSTANCE which should be handled by trained staff only.
Storage:	4 °C
Storage Comment:	The antibody solution should be stored undiluted between 2°C and 8°C.

Images



Western Blotting

Image 1.